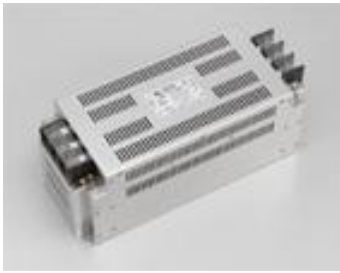


HF3000C-UQC Series (RoHS 対応品)

三相3線式 480VAC

高減衰・大電流(低漏洩電流タイプ)



150A品 外観



UL1283 (file No.E102708)

EN60939-2 (file No.R50031225)

SCCR対応(80~400A品)

・ブレーカとコンビネーションで取得

・Listed認定品であればどのメーカーのブレーカでも使用可能

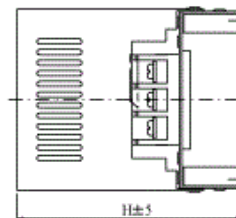
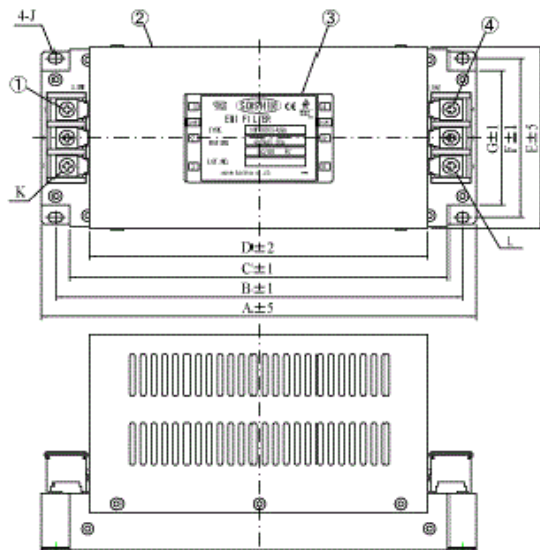
用途

IGBTインバータ、ACサーボ、NC制御機器など

仕様

| Part No. | Rated Current | SCCR value | Weight | Dimensions [mm] | | | | | | | | | | | |
|-----------------|----------------------------------|------------|--------|-----------------|-----|-----|-----|-----|-----|----|-----|------------|----|----|------|
| | | | | A | B | C | D | E | F | G | H | J | K | L | |
| HF3010C-UQC | 10A | - | 2.2kg | 186 | 171 | 156 | 136 | 98 | 84 | 73 | 95 | φ4.5×6 | M4 | M4 | fig1 |
| HF3020C-UQC | 20A | | 2.8kg | 236 | 221 | 206 | 184 | 105 | 90 | 76 | 122 | φ5.5 ×7 | M5 | M5 | |
| HF3030C-UQC | 30A | | 3.3kg | | | | | | | | | | | | |
| HF3040C-UQC | 40A | | 4.0kg | 256 | 241 | 226 | 204 | 115 | 100 | 86 | 127 | | | | |
| HF3050C-UQC | 50A | | 4.5kg | | | | | | | | | | | | |
| HF3060C-UQC | 60A | | 4.5kg | | | | | | | | | | | | |
| HF3080C-UQC | 80A | 30kA | 9.0kg | | | | | | | | | | | | |
| HF3100C-UQC | 100A | | 11.0kg | | | | | | | | | | | | fig3 |
| HF3150C-UQC | 150A | | 14.0kg | | | | | | | | | | | | |
| HF3200C-UQC | 200A | 42kA | 20.0kg | | | | | | | | | | | | fig4 |
| HF3250C-UQC | 250A | | 21.0kg | | | | | | | | | | | | |
| HF3300C-UQC | 300A | | 22.0kg | | | | | | | | | | | | |
| HF3400C-UQC | 400A | | 33.0kg | | | | | | | | | | | | |
| Rated Voltage | 480VAC max | | | | | | | | | | | | | | |
| Leakage Current | 10mA max / 400VAC 50Hz By UL1283 | | | | | | | | | | | | | | |
| Ambient temp. | -20 up to 50 Deg.C | | | | | | | | | | | | | | |

fig.1 (10~60A)



| No | Item |
|----|-----------------|
| 1 | Input terminal |
| 2 | Resin case |
| 3 | Label |
| 4 | Output terminal |

fig.2 (80, 100A)

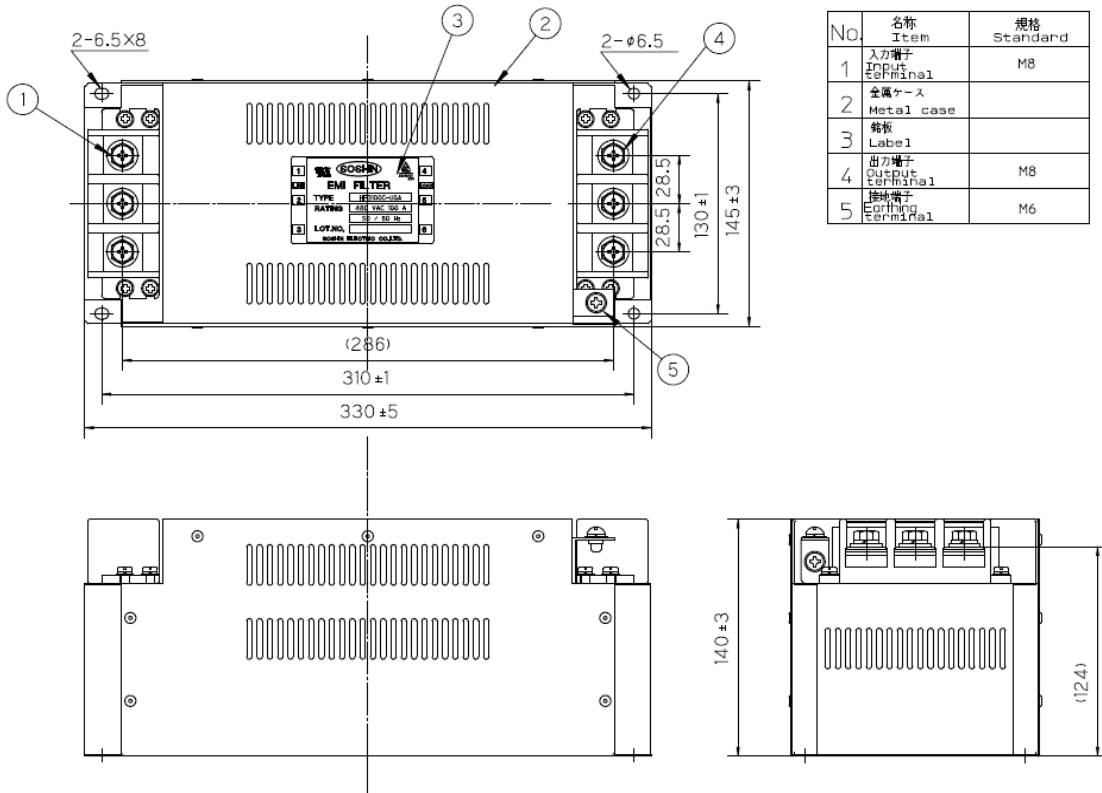


fig. 3 (150A)

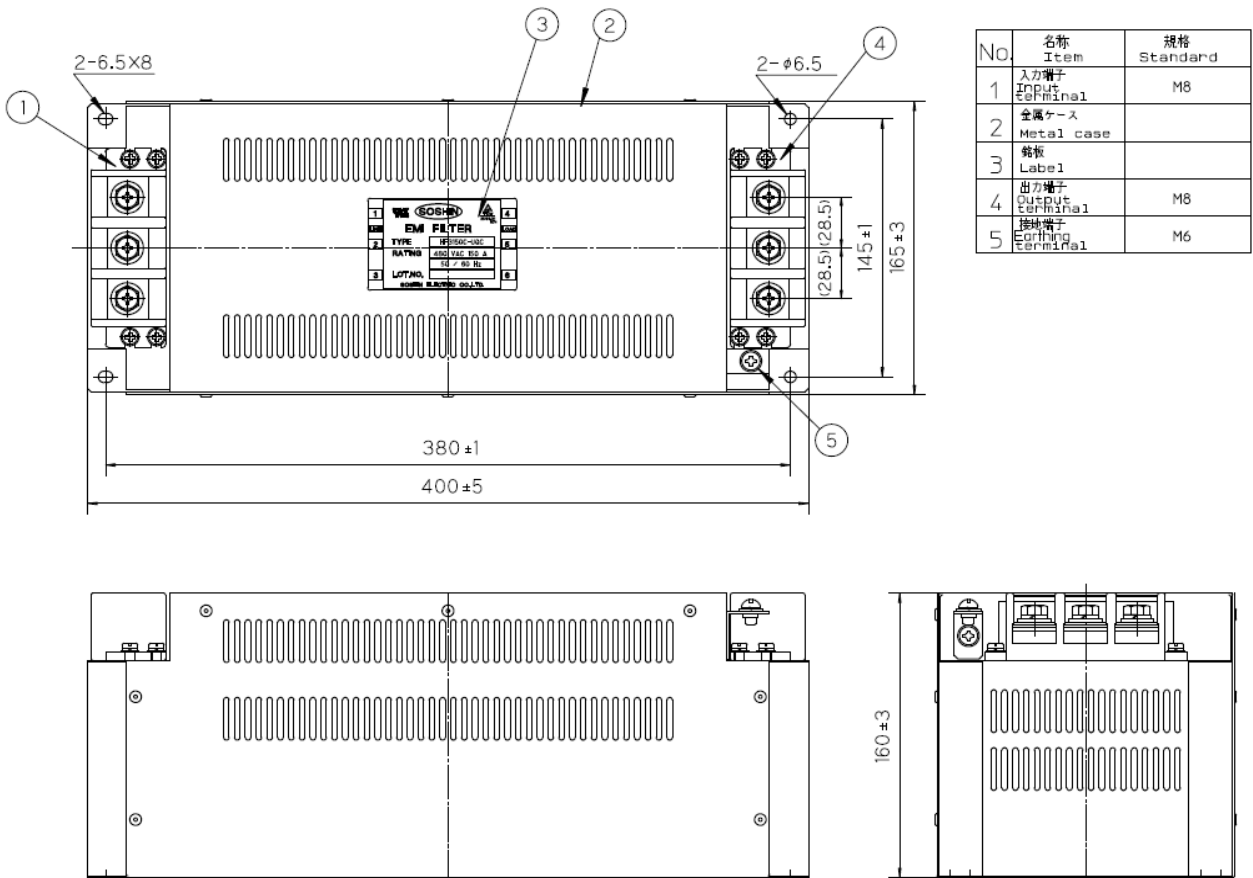
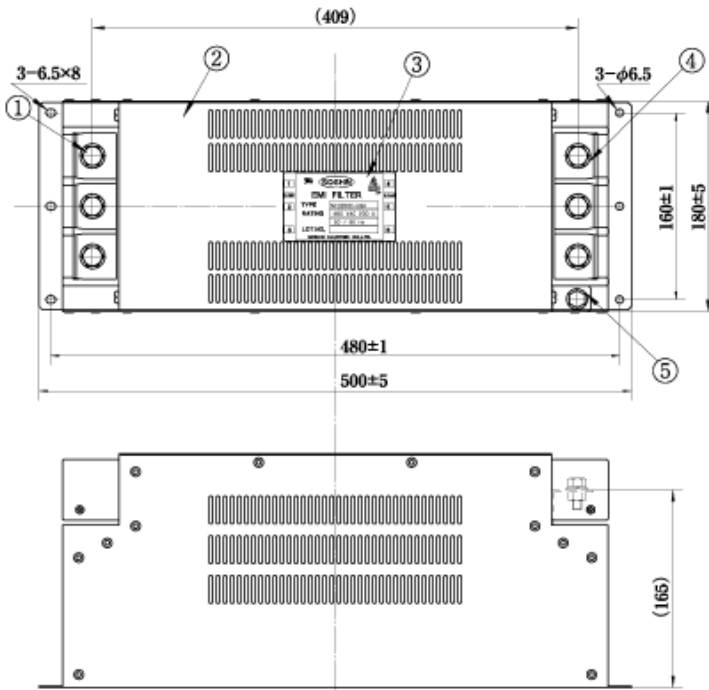


fig. 4 (200, 250, 300A)



| No | Item | Notes |
|----|-------------------|-------|
| ① | Input terminal | M10 |
| ② | Metal case | |
| ③ | Label | |
| ④ | Output terminal | M10 |
| ⑤ | Earthing terminal | M8 |

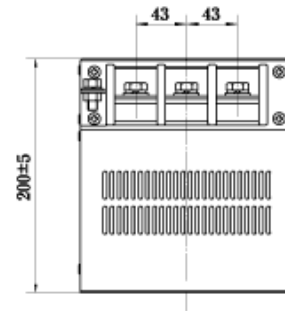
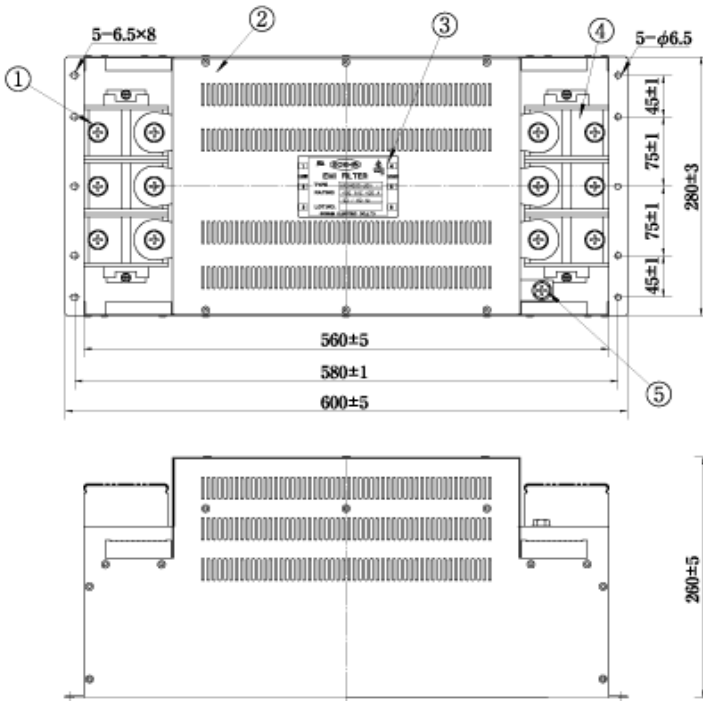
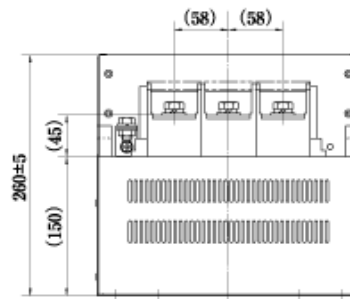


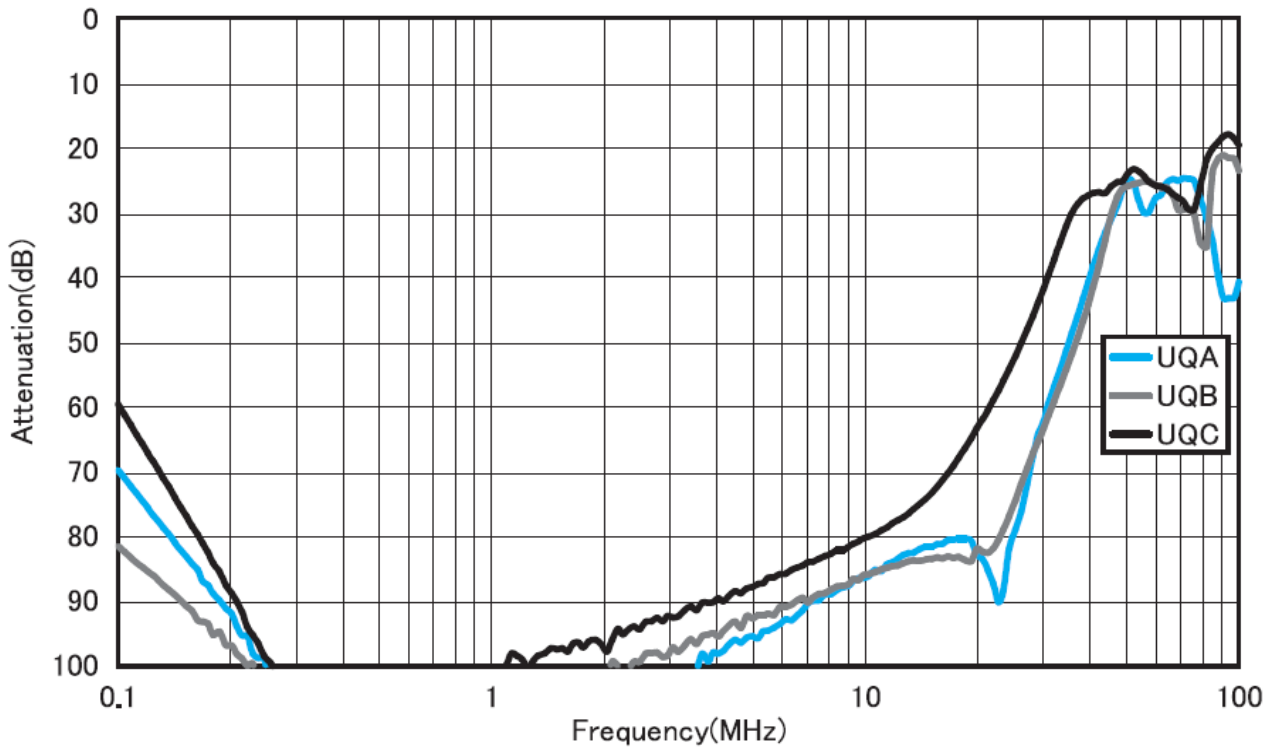
fig. 5 (400A)



| No | Item | Notes |
|----|-------------------|-------|
| ① | Input terminal | M12 |
| ② | Metal case | |
| ③ | Label | |
| ④ | Output terminal | M12 |
| ⑤ | Earthing terminal | M10 |



減衰特性



回路図

