

HF3000C-UQA Series (RoHS Compliant)

3-phase 3-line 480VAC Large current & High attenuation, (Low Leakage type)



150A



UL1283 (file No.E102708)
 EN60939-2 (file No.R50031225)
 SCCR compliant

- Acquired in combination with breaker
- Any manufacturer's breaker certified as the listed products can be used

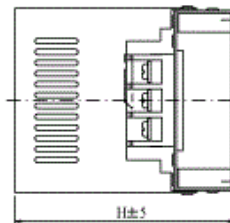
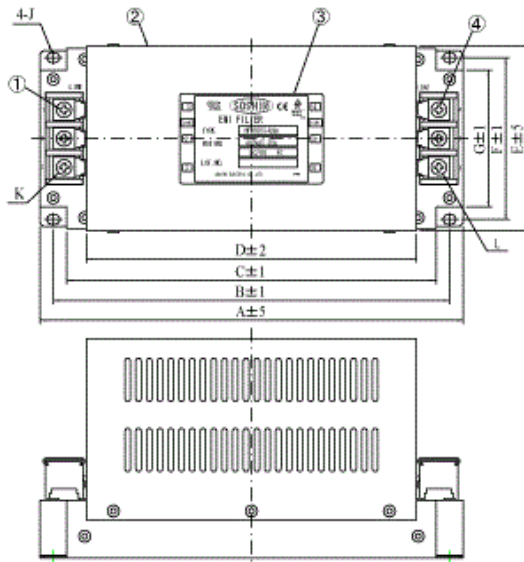
Applications

IGBT Inverter, AC Servo, NC Machinery

Specifications

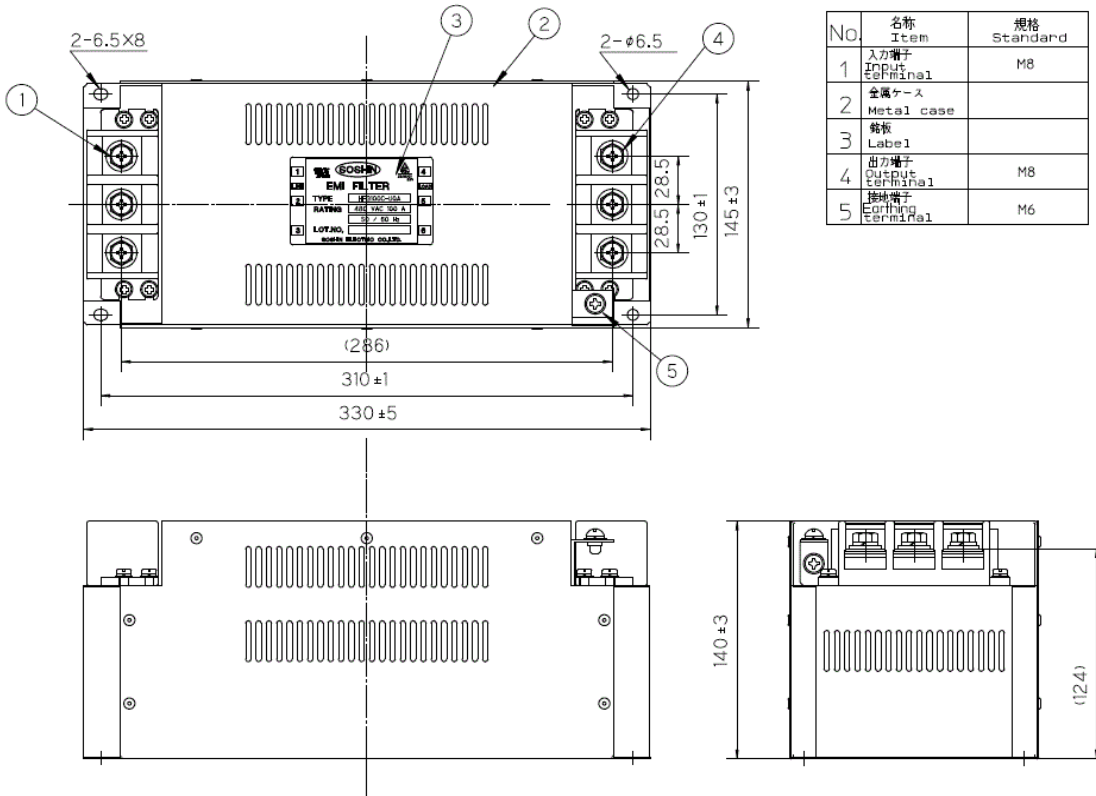
Part No.	Rated Current	SCCR value	Weight	Dimensions [mm]											fig1
				A	B	C	D	E	F	G	H	J	K	L	
HF3010C-UQA	10A	-	2.2kg	186	171	156	136	98	84	73	95	φ4.5×6	M4	M4	fig1
HF3020C-UQA	20A		2.8kg	236	221	206	184	105	90	76	122	φ5.5×7	M5	M5	
HF3030C-UQA	30A		3.3kg												
HF3040C-UQA	40A		4.0kg	256	241	226	204	115	100	86	127	φ5.5×7	M5	M5	
HF3050C-UQA	50A		4.5kg												
HF3060C-UQA	60A		4.5kg	Refer to fig2											
HF3080C-UQA	80A	30kA	9.0kg	Refer to fig2											
HF3100C-UQA	100A		11.0kg	Refer to fig2											
HF3150C-UQA	150A		14.0kg	Refer to fig3											
HF3200C-UQA	200A	42kA	20.0kg	Refer to fig4											
HF3250C-UQA	250A		21.0kg	Refer to fig4											
HF3300C-UQA	300A		22.0kg	Refer to fig4											
HF3400C-UQA	400A		33.0kg	Refer to fig5											
Rated Voltage	480VAC max														
Leakage Current	10mA max / 400VAC 50Hz By UL1283														
Ambient temp.	-20 up to 50 Deg.C														

fig.1 (10-60A)



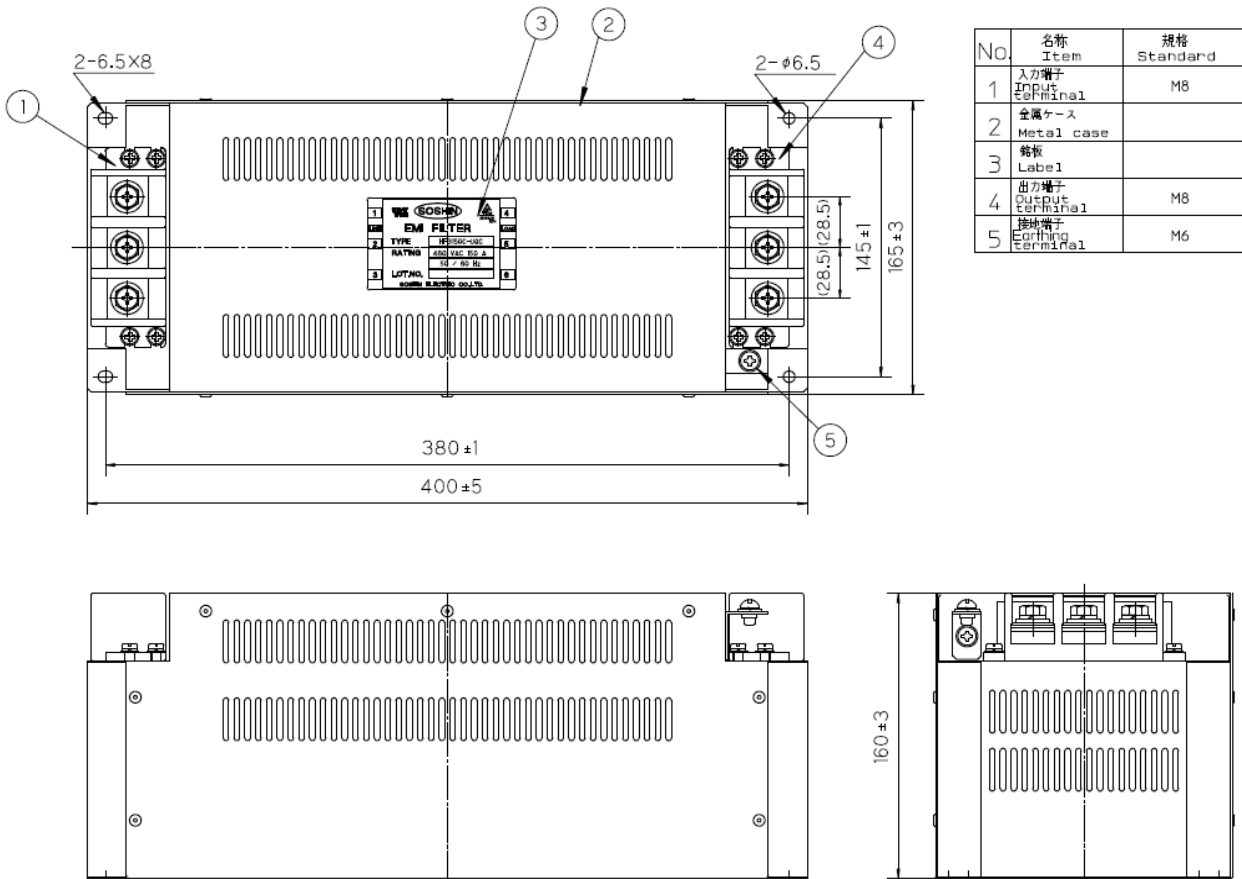
No	Item
1	Input terminal
2	Resin case
3	Label
4	Output terminal

fig.2 (80, 100A)



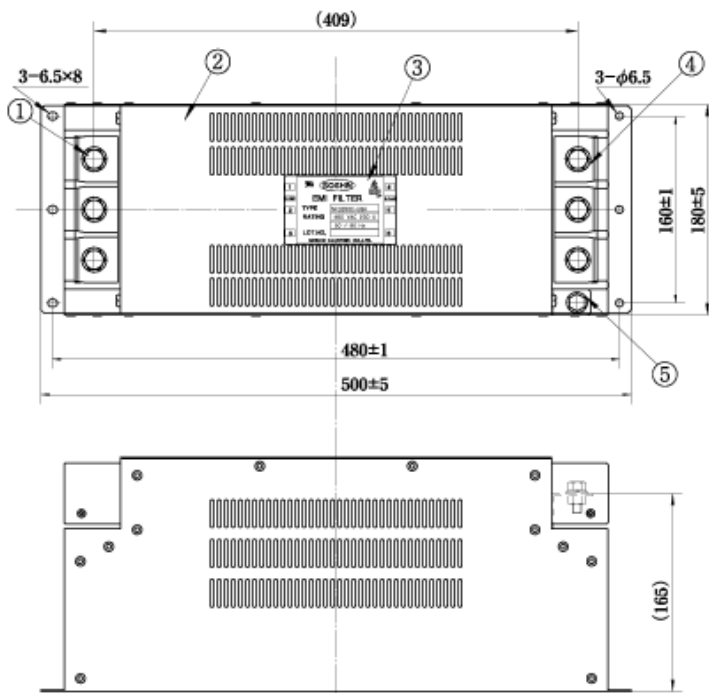
No.	名称 Item	規格 Standard
1	入力端子 Input terminal	M8
2	金属ケース Metal case	
3	銘板 Label	
4	出力端子 Output terminal	M8
5	接地端子 Earthing terminal	M6

fig. 3 (150A)



No.	名称 Item	規格 Standard
1	入力端子 Input terminal	M8
2	金属ケース Metal case	
3	銘板 Label	
4	出力端子 Output terminal	M8
5	接地端子 Earthing terminal	M6

fig. 4 (200, 250, 300A)



No	Item	Notes
①	Input terminal	M10
②	Metal case	
③	Label	
④	Output terminal	M10
⑤	Earthing terminal	M8

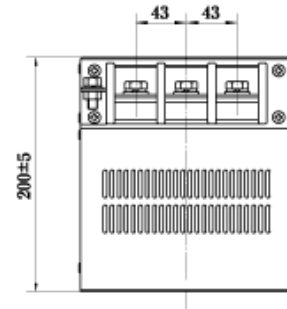
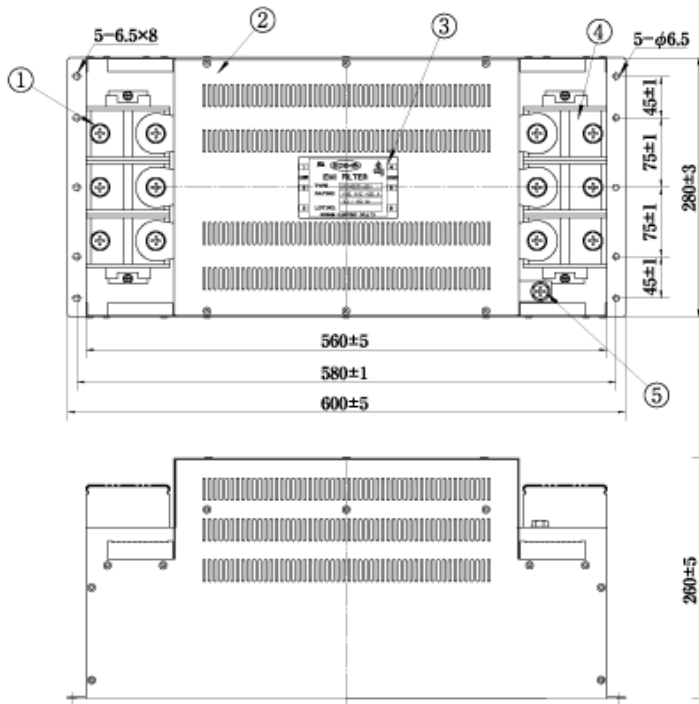
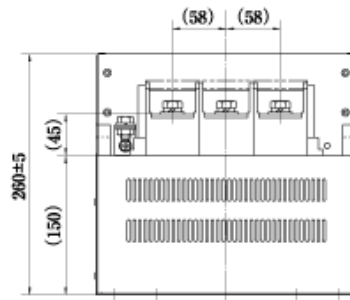


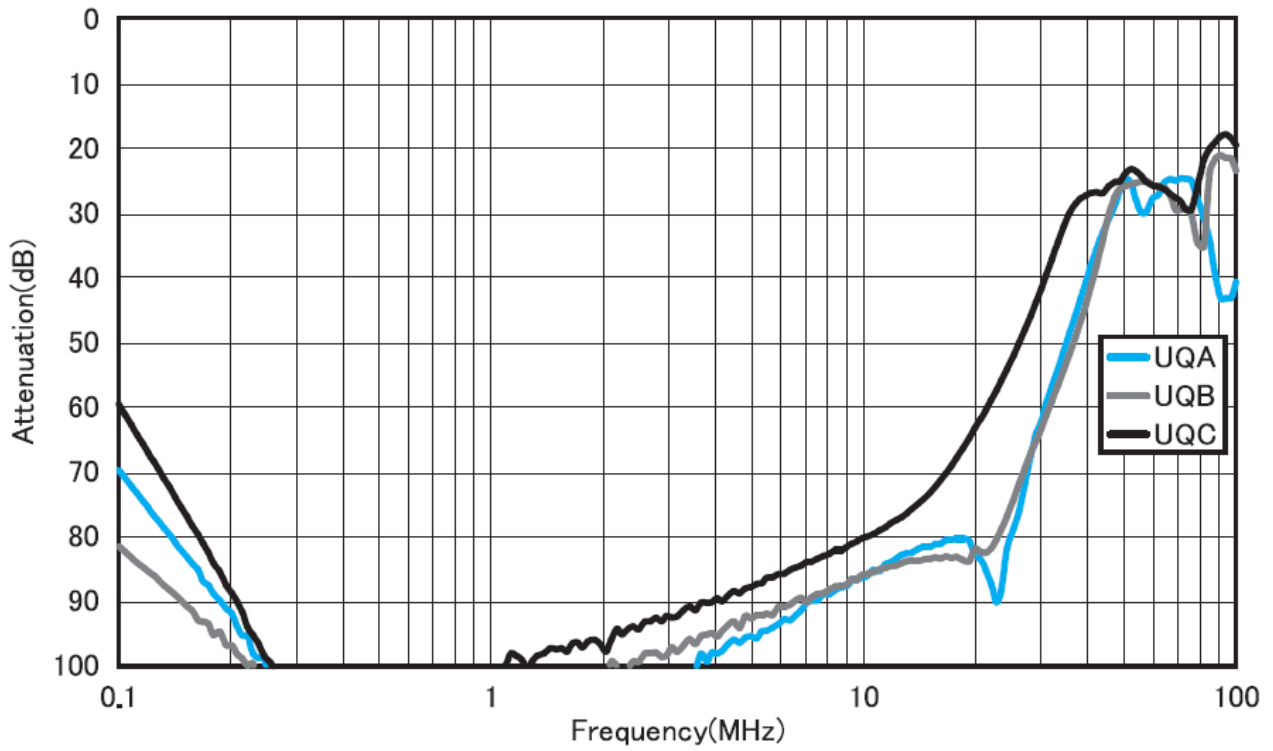
fig. 5 (400A)



No	Item	Notes
①	Input terminal	M12
②	Metal case	
③	Label	
④	Output terminal	M12
⑤	Earthing terminal	M10



Attenuation Characteristics



Circuit Diagram

