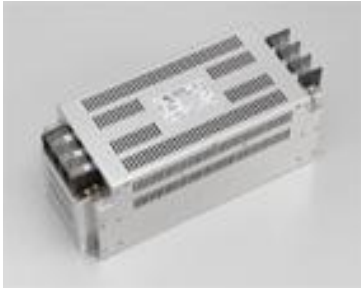


HF3000C-UQC Series (RoHS Compliant)

3-phase 3-line 480VAC Large current & High attenuation (Low Leakage type)



150A



Type Approved
Safety
Regular Production
Surveillance

www.tuv.com
ID 2000000000

UL1283 (file No.E102708)
EN60939-2 (file No.R50031225)
SCCR compliant

- Acquired in combination with breaker
- Any manufacturer's breaker certified as the listed products can be used

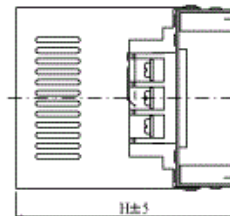
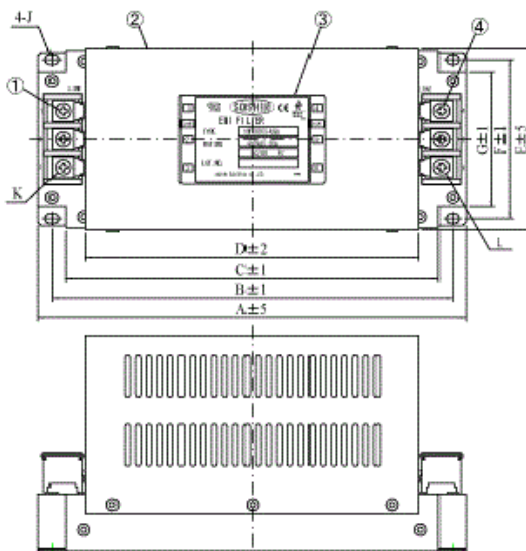
Applications

IGBT Inverter, AC Servo, NC Machinery

Specifications

Part No.	Rated Current	SCCR value	Weight	Dimensions [mm]											fig1
				A	B	C	D	E	F	G	H	J	K	L	
HF3010C-UQC	10A	-	2.2kg	186	171	156	136	98	84	73	95	φ4.5×6	M4	M4	fig1
HF3020C-UQC	20A		2.8kg	236	221	206	184	105	90	76	122				
HF3030C-UQC	30A		3.3kg												
HF3040C-UQC	40A		4.0kg	256	241	226	204	115	100	86	127	φ5.5×7	M5	M5	
HF3050C-UQC	50A		4.5kg												
HF3060C-UQC	60A		9.0kg	Refer to fig2											
HF3080C-UQC	80A	30kA	11.0kg	Refer to fig3											
HF3100C-UQC	100A		14.0kg	Refer to fig4											
HF3150C-UQC	150A		20.0kg	Refer to fig5											
HF3200C-UQC	200A	42kA	21.0kg	Refer to fig4											
HF3250C-UQC	250A		22.0kg	Refer to fig5											
HF3300C-UQC	300A		33.0kg	Refer to fig5											
HF3400C-UQC	400A		33.0kg	Refer to fig5											
Rated Voltage	480VAC max														
Leakage Current	10mA max / 400VAC 50Hz By UL1283														
Ambient temp.	-20 up to 50 Deg.C														

fig.1 (10-60A)



No	Item
1	Input terminal
2	Resin case
3	Label
4	Output terminal

fig.2 (80, 100A)

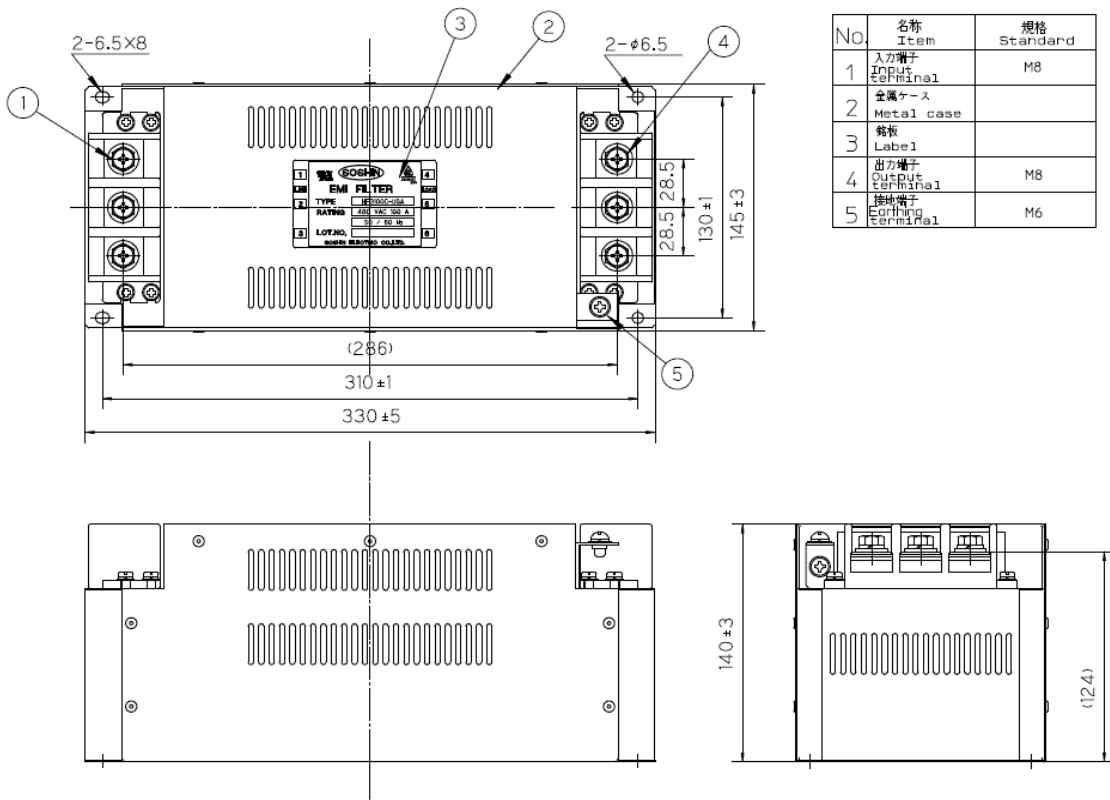


fig. 3 (150A)

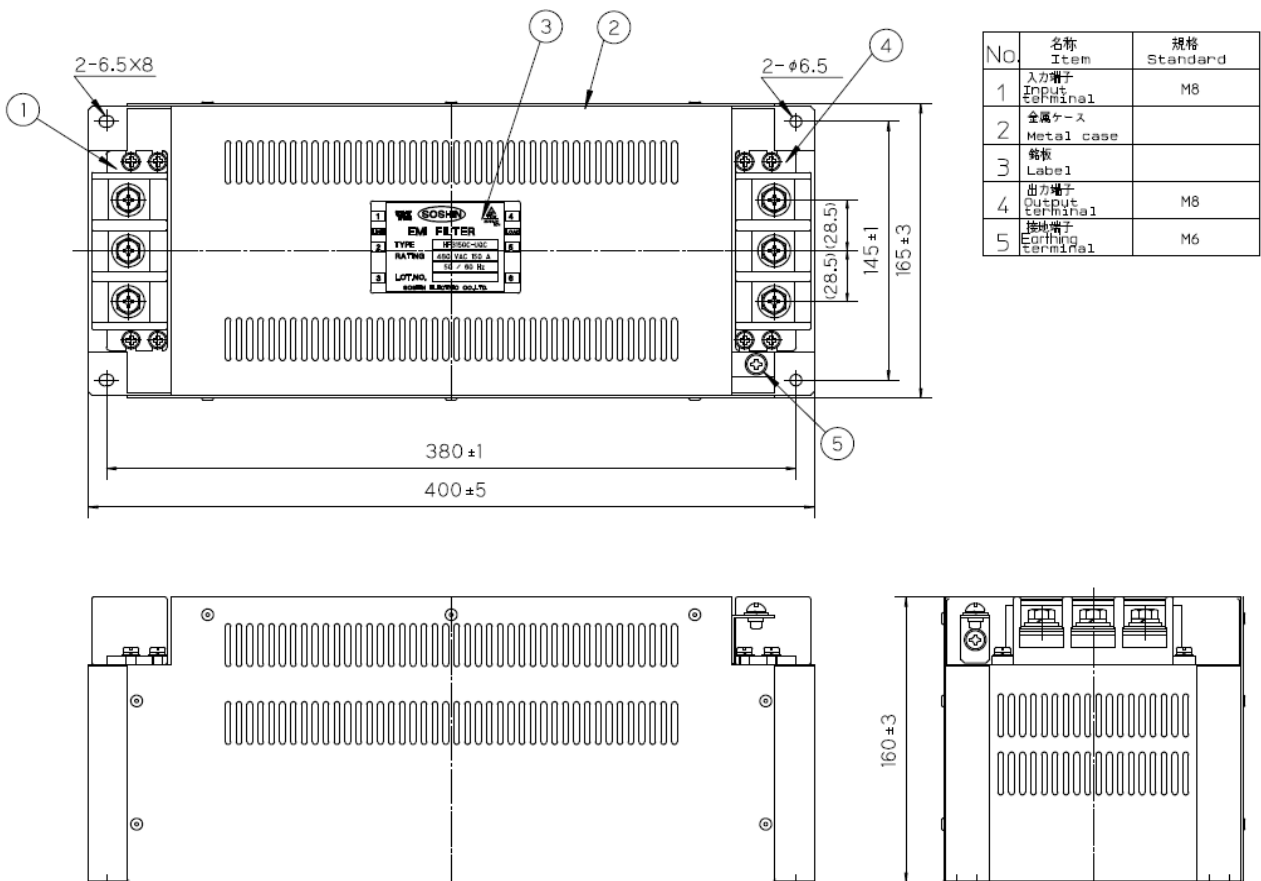
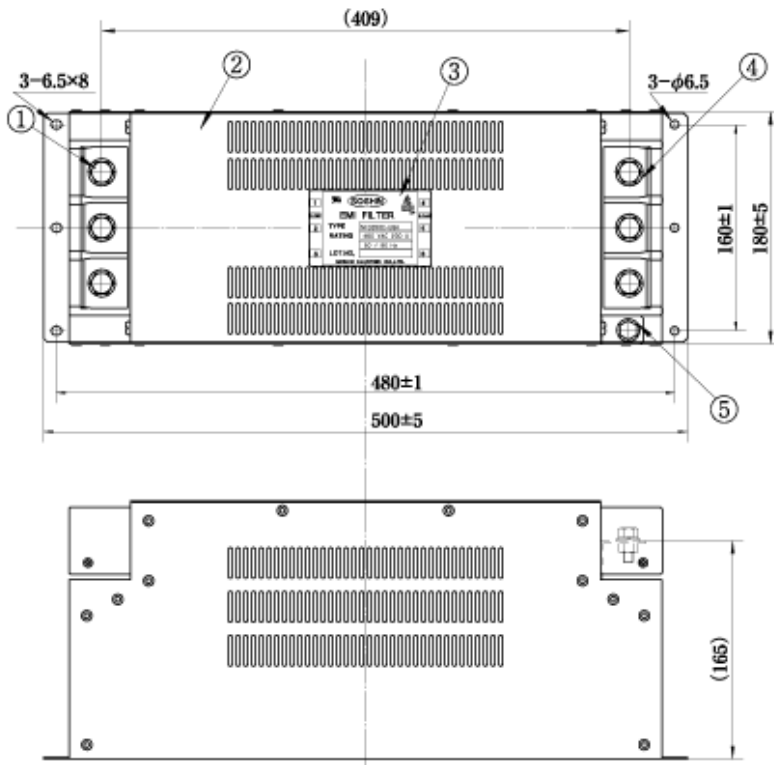


fig. 4 (200, 250, 300A)



No	Item	Notes
①	Input terminal	M10
②	Metal case	
③	Label	
④	Output terminal	M10
⑤	Earthing terminal	M8

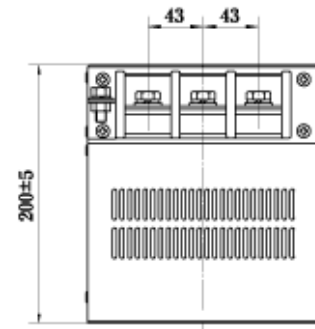
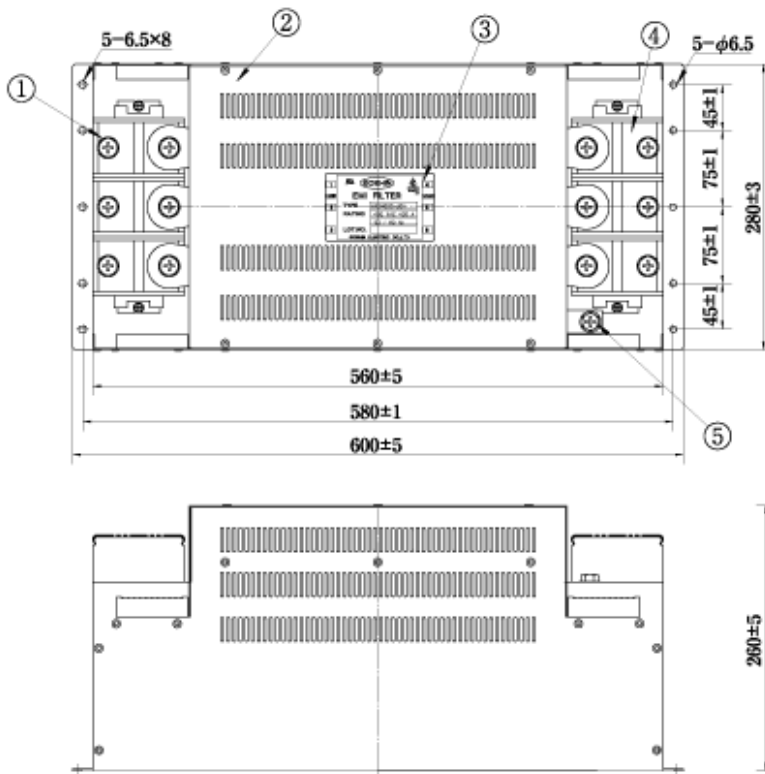
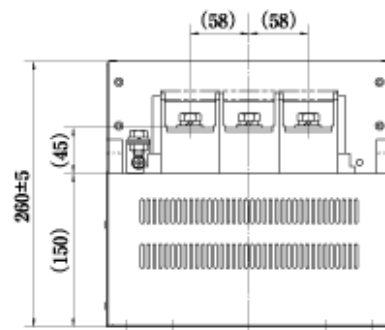


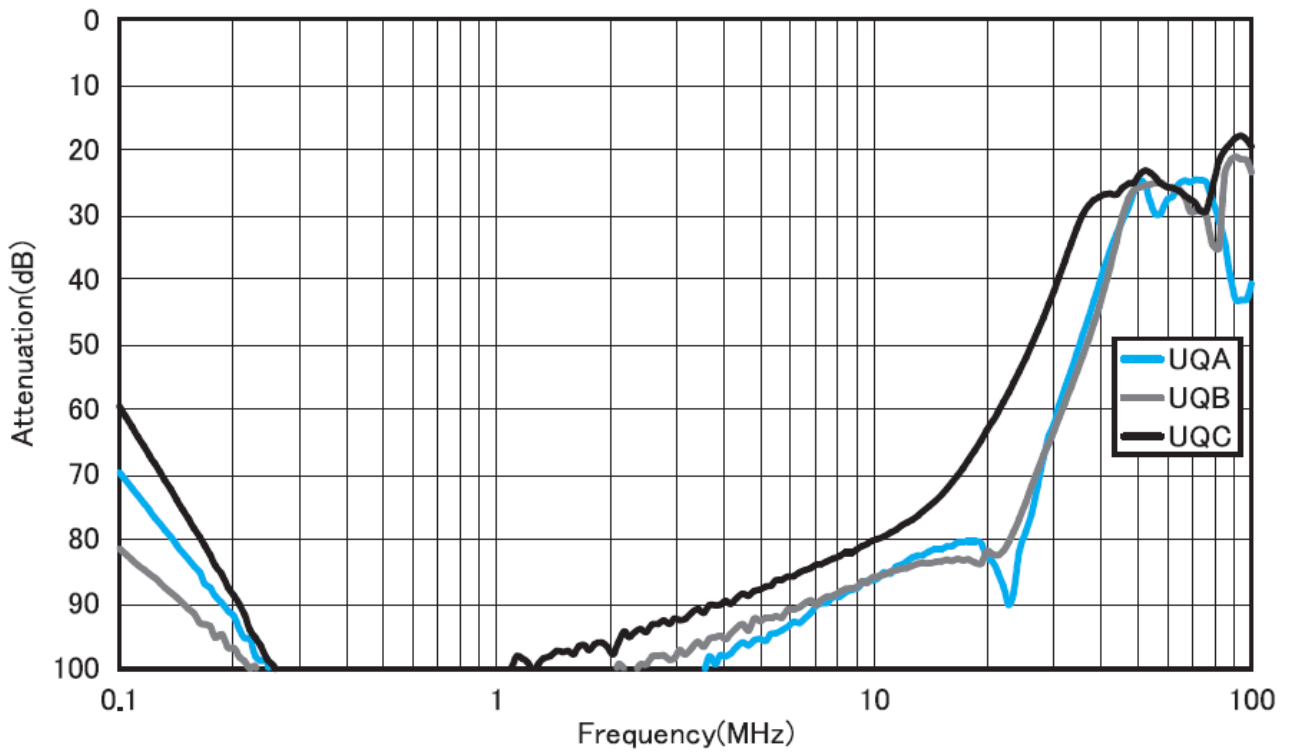
fig. 5 (400A)



No	Item	Notes
①	Input terminal	M12
②	Metal case	
③	Label	
④	Output terminal	M12
⑤	Earthing terminal	M10



Attenuation Characteristics



Circuit Diagram

