



2016

Social Responsibility & Environmental Report

*e
rth*

双信電機株式会社
SOSHIN ELECTRIC CO., LTD.

Soshin Powertech Co., Ltd.
Soshin Device Co., Ltd.
Risshin Electronics Co., Ltd.
Soshin Electronics (M)Sdn. Bhd.

Business Summary

2016 Social Responsibility & Environmental Report

Contents

■ Business Summary and so on

Corporate profile & Business locations	1
Business domain & related products.....	2
Message from the President / Corporate governance	3
Guidelines for corporate behavior	4

■ Social Responsibility Report

Respect for humanity and assurance of a comfortable working environment	5
Cooperation with local communities and promotion of social action programs.....	6

■ Environmental Report

Environmental Report	
Environmental management system	7
Outline of environmental preservation activities	8
Environmental accounting.....	9
Mass balance / Contained chemical substances	10
Approach to reduction of environmental loads	11
Examples of energy saving measures	12
Approach to resource utilization.....	13
Questionnaire	14

Editorial policy

This report presents the Group of Soshin Electric companies' approach to society and the environment as one of NGK INSULATORS, LTD. companies.

【Period covered】

From April 2015 to March 2016

【Coverage】

Soshin Electric Co., Ltd.
Soshin Powertech Co., Ltd.
Soshin Device Co., Ltd.
Risshin Electronics Co., Ltd.
Soshin Electronics (M) Sdn. Bhd.

Issued in June 2016

■ Corporate Profile (As of the end of March 2016)

Company name : Soshin Electric Co., Ltd.
URL: <http://www.soshin.co.jp>

Tokyo Head Office

No. 1-1-1, Shibaura, Minato-ku, Tokyo 105-0023, Japan
Tel. 81-3-5730-4500 Fax. 81-3-5730-4504

Established in : December 1938

Incorporated in : April 1944

Capital : 3,806 million Japanese yen
(As of the end of March 2016)

Number of employees : 787 (Total)
(As of the end of March 2016)

■ Business Locations

【Sales offices in Japan】

Tokyo Operating Headquarters
Osaka office / Nagoya office / Saku office / Kyushu office

【Domestic plant and R&D location】

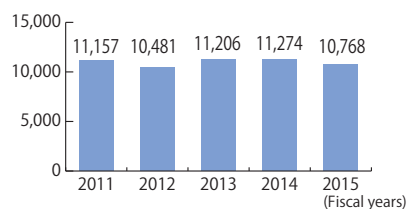
Asama Plant / Chikuma Technical Center

【Group companies】

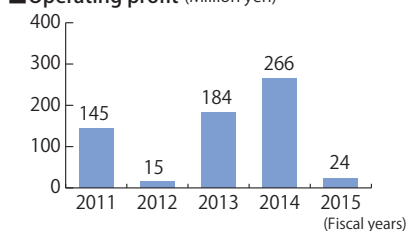
Soshin Powertech Co., Ltd.
Soshin Device Co., Ltd.
Risshin Electronics Co., Ltd.
Soshin Electronics (M) Sdn. Bhd.
Soshin Electronics of America Inc.
Soshin Electronics Europe GmbH
Soshin Electronics (SZ) Limited
Taiwan Soshin Electric Co., Ltd.

■ Financial Highlights

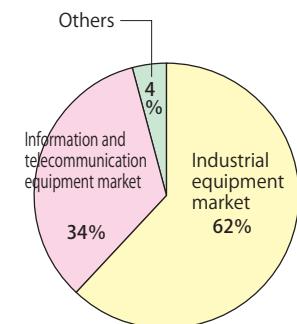
■ Sales amount (Million yen)



■ Operating profit (Million yen)



■ Sales ratio per market (2015)



Business Domain & Related Products

The Group of Soshin Electric companies supplies electronic components meeting the needs of the times and expectations of customers in the industrial instrument and information and telecommunication equipment markets.

Industrial equipment market

• EMC noise product market

Electromagnetic wave noise that develops from electronic equipment may cause equipment to malfunction and adversely affect human bodies. As a consequence, demand is growing for noise suppression products that suppress or block out such noise. The noise suppression products we supply are widely used in inverters that have won popularity as energy saving devices for electronic equipment, with their fields of application extending to renewable energies such as solar power and wind power generation. Furthermore, our range of business includes total support for customers such as provision of measuring and diagnosing services on site or at our large radio-wave shield chamber.

• Car and railway electronics

In automobiles where high level reliability is required, thick film substrates are used and noise filters and capacitors are used in plug-in hybrid electric vehicles (PHEV) and electric vehicles (EV) which are gaining market acceptance.

Railway vehicles and rail traffic control systems are other areas where a variety of our filters and capacitors work to support safety and ease.



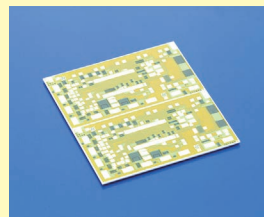
Noise filter for PV systems



Reactor cores for noise suppression



On-site noise-testing vehicle



Thick-film substrate



Film capacitor



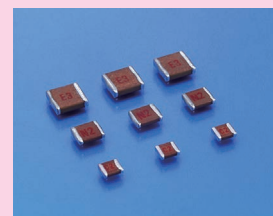
Noise filter

Information and telecommunication equipment market

• For information and telecommunication infrastructures
RF parts such as couplers, and filters and capacitors support communication systems including base stations for mobile phone systems.



LC filters



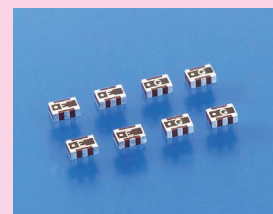
Chip mica capacitors

• For telecommunication terminals

Multilayered dielectric filters are adopted for ever-advancing smartphone, wireless LAN systems for tablet PC terminals and for Bluetooth communication modules.



Couplers



Multilayered dielectric filters

Message from the President



President
Takashi Kamioka

We at the Group of Soshin Electric Companies have contributed heavily to society and continue to through our business and production activities. Our electronic components, such as EMI filters, which help to support the energy saving societal needs are widely incorporated in the Power Electric, Railway Systems Industries and so on. We are actively involved and at the forefront of building a low-carbon footprint society by reducing our use of environmentally hazardous substances in our processes. We are under constant challenge to improve our process techniques and to use self sustaining energy such as Solar Power when ever it can be incorporated.

The Soshin Electric Companies have taken steps to ensure we maintain our high level of compliance. We have established a system to carefully listen to instructions and suggestions from both Internal and External Directors and Auditors. Frequently questionnaires are sent out to our Board Members and Employees as a means of checks and balances on any non-compliance issues that may arise. We also have the "Help Line" system as a contact window which our employees can easily reach out. With this system in place we are able to react quickly and maintain our high level of compliance in business activities.

The Soshin Electric Companies are actively involved in and give full consideration to the roles and responsibilities of a corporation in today's society. Our commitment to helping improve society through business activities is at the highest level of standard. Last April, the Soshin Electric Companies made a donation to the Kumamoto Earthquake Relief Fund to help assist in the rebuilding and assistance of those in need. In every location where there is a Soshin Electric Company facility, we are actively engaged in the Community and their Local Sporting Events.

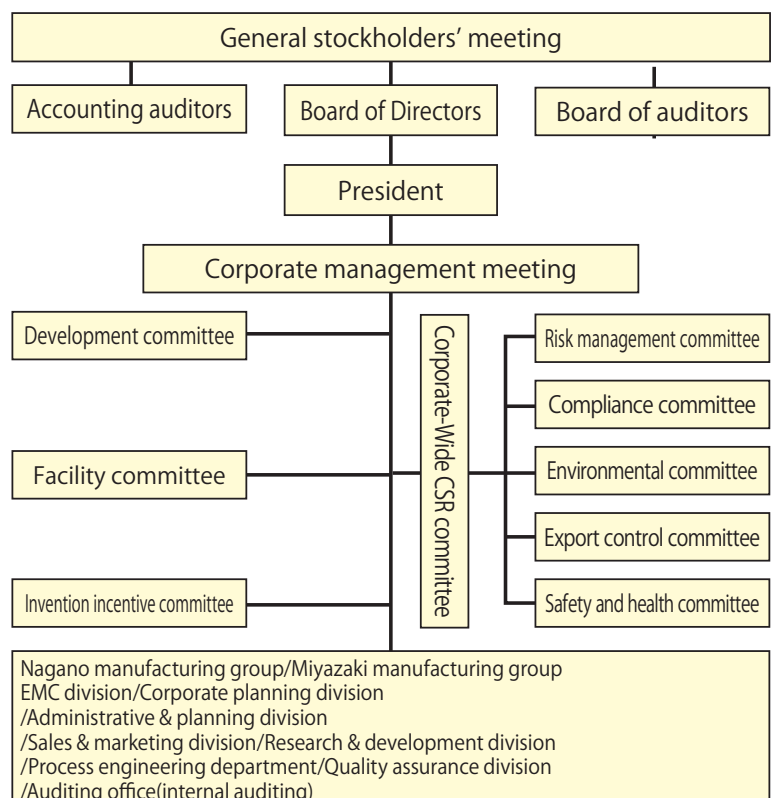
◆ Corporate Governance

The Group of Soshin Electric companies has positioned enhancement of corporate value as one of our key management issues.

We regard the enhancement of corporate governance as an important measure that raises the legality of the business activities and transparency of corporate management, leads us to become an entity trusted by every stakeholder (stockholders, customers, company employees, suppliers and relevant local communities) and is conducive to the rise of corporate value.

To make them a reality, we strive for ensured compliance with laws by identifying the responsibilities of the Board of Directors' Meeting and Auditors' Meeting such as adjustment of the management organization, improved management efficiency and enhancement of the management monitoring function. Establishment of relationship of mutual trust through ensured gaining of stockholders' privilege and equality and promoted dialogues are other matters we seek.

Governance system





Soshin Electric Co. Group's Guidelines for Corporate Behavior

I Realization of corporate philosophy

[1] Provision of products that better contribute to social environment

From a long-term global perspective, we will commit ourselves to create new value by providing products and services that protect the global environment and realize safety and security in society. We will gain trust from our customers and society by seeking quality and safety.

II Policy to engage in business activities

[2] Disclosure of corporate information

We will release, in an accurate and timely manner, information sought by the public, including information on our management, finance, products or services to improve transparency in management and gain society's trust in NGK group companies.

[3] Total enforcement of compliance and risk management

We will abide by the laws and rules of each country and area in which we do business and will enforce our compliance thoroughly, respecting international arrangements that are applicable to us.

We will develop human resources who are sincere and have high ethical standards. In addition, through our efforts to build an internal control system and implement risk management, we will protect our corporate assets and credit, as well as the rights of third parties.

[4] Respect for humanity and assurance of comfortable working environment

We will hire and treat people in a proper and fair manner and provide a safe and pleasant working environment in which our people can work comfortably without sacrificing their family life. We will make available opportunities that people with versatile talent can try and will support the development of human resources through the acquisition of knowledge and expertise.

We will prevent bullying, discrimination, harassment or any other acts that violate human rights. If there is a human rights violation, we will take appropriate action in an expeditious manner.

[5] Implementation of fair, free and transparent transactions

As a good and equal partner, we will implement fair, free and transparent transactions in search of mutual benefit with our business partners.

In addition, we will promote our commitment to discharge our corporate responsibility for society throughout the supply chain used by the NGK group companies.

III As a member of society

[6] Preservation of global environment

We will contribute to the preservation of the global environment by committing ourselves to take the lead in reducing environmental burdens at every location and in every process that is involved in our business activities. We will cooperate in efforts with local communities to preserve the environment and will also actively support our employees' efforts.

[7] Cooperation with local communities and promotion of social action programs

We will actively commit ourselves to contributing to society, satisfying the needs of local communities with our interest in the social tasks required by each country and local community in accordance with our objective to become a corporate citizen that can be trusted by local communities.

[8] Communication with stakeholders

Through communication with all of our stakeholders, including customers, business partners, shareholders, employees and members of local communities, we will enhance their understanding of the NGK group companies and review corporate activities based on comments forwarded to us. We will use these in our efforts to accomplish our social responsibilities.

Social Responsibility Report

R espect for Humanity and Assurance of a Comfortable Working Environment

◆ Basic employment policy

We at the Group of Soshin Electric companies have tried to ensure employment stability through the establishment of manpower plans ascertaining to mid- to long-term business development. Such efforts included planned employment of new graduates and active deployment of internal job rotation, placement of the right people with necessary ability and experience in the right job, and promotion of activities that helped employees find their jobs challenging without needing to exercise extra care.

◆ Esteem for individuality and diversity

Our employment level of disabled people was 2.52% (as of Apr. 2016), which exceeded the legally set 2.0% minimum. As a result of the establishment of a re-employment system for employees who have passed mandatory retirement age, flexible working arrangements, including full-time and part-time work programs, are provided to fit individuals' post-retirement plans.

◆ Realization of work-life balance

Many female employees have taken up the opportunity for pre-natal and post-partum maternity leave and infant care before returning to work. Furthermore, refreshment holiday and planned paid holiday systems are provided for employees to refresh their minds and bodies.

◆ Health and safety

The Group of Soshin Electric companies has actively made health and safety activities as a matter of top priority aiming for zero occupational accidents, in addition to ensuring employees' health and safety and promoting more comfortable working environments.

Our major activities include those where risk factors arise. Training for dealing with near-miss incidents and danger prediction has been provided to employees in conjunction with the National Industrial Safety Week and National Industrial Health Week. Suggestions made by them have achieved great results. Moreover, mutual patrolling of Plants for facility accident prevention has been a semiannual event to ensure safety.

For promotional purposes of employees' good health, we have a healthcare system in place by having company nurses on duty and we actively pursue good health for employees. For this year onward, employees will be given a stress check.

These activities have kept the Group of Soshin Electric companies free from serious work-related accidents for longer than five years. With safety

◆ Creation of a healthy mental state

To promote better communications among employees, new employees, managers and ordinary employees attached to each hierarchy level have been provided with a workshop. The workshop provided a system presenting an opportunity to obtain knowledge of mental slumps and to learn about self-care and line care.

Another system is additionally available with the Group of Soshin Electric companies for provision to employees of opportunities to consult with industrial physicians, consultant physicians, health nurses, contracted counselors and industrial health staff for promotion of their mental and physical health.



Provision of an opportunity for collective learning about line care

and good health always regarded as matters of top priority, our activities will continue.



Mutual accident-prevention

Social Responsibility Report

C ooperation with local communities and promotion of social action programs

International Volunteer Day, the day of concurrent action for contribution to society

To support the event led by the owner of the building where our Tokyo Head Office is located, we sold fair trade goods to support their producers in developing countries.

*"Fair trade" is the term used to describe the a mechanism that supports producers' lives by purchasing their products at reasonable prices.



Soshin Cup Tennis Meet

The 15th Soshin Cup Tennis Tournament was held in the Nagano area.



Acceptance of internship

Local high school students took a factory tour and undertook work experience in the Nagano and Miyazaki areas.



Soshin Cup Volleyball Meet

The 30th Soshin Volleyball Meet was held in Miyazaki area.



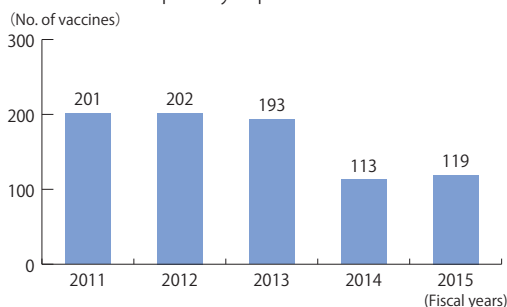
Participation in an evacuation drill staged by the General Support Center for Senior Citizens

Soshin Powertech Co. supported the evacuation drill staged by the neighboring General Support Center for Senior Citizens.



Eco-cap Campaign

Bottle caps collected since 2008 through this campaign reached a quantity equivalent to 119 vaccines in.



Christma presents

Soshin Powertech Co. and Soshin Device Co. presented Christmas presents to their neighboring nurseries.



Environmental Report

Environmental Management System

Environmental policy of the Group of Soshin Electric companies

1. Compliance with legislation, pacts, agreements with customers and voluntary standards
2. Identification of environmental objectives and organized continuous promotion of activities with local communities to reduce environmental burdens
3. Development, design, production and marketing of environmentally-friendly products
4. Implementation of preventative measures and monitoring of environmental pollution
5. Continuous encouragement of education, training and enlightenment activities to raise awareness of the roles and responsibilities of employees, as well as all other people involved in our business activities 1.

◆ System of promoting environmental preservation activities

Decisions on policies and tactics of the Group of Soshin Electric companies regarding environmental preservation will be made by the "Environmental Committee" which the Director responsible for environmental matters chairs. The policies and tactics thus decided will be disseminated across the company via the vice-top management (plant / site manager) and the manager responsible for environmental matters for each site.

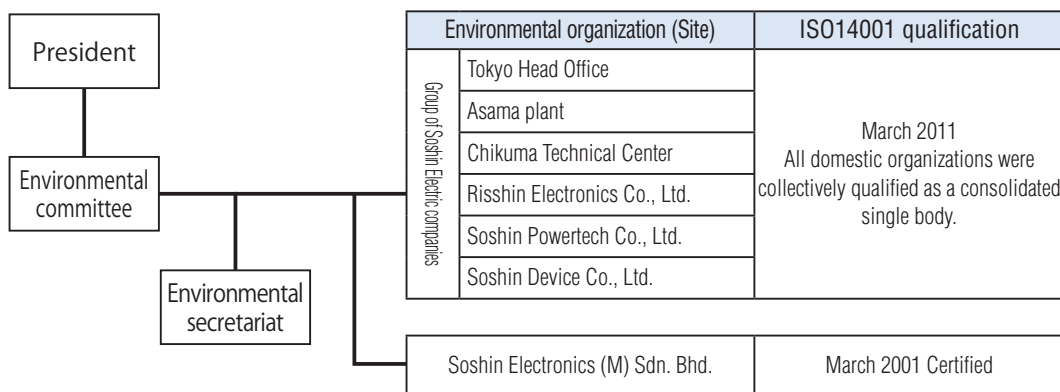
Activities for which the environmental organization is responsible include reciprocally holding an Environmental Conference every six months and an energy management conference every month, in addition to the Environmental Committee held semiannually. These conferences are to gain a grasp of the amounts of CO₂ emitted and industrial waste and control progress toward targets and exchange information on the environment, in addition to continuous promotion of the environmental preservation activities.

◆ Qualification for ISO14001 and environmental Audits

For ISO14001, the international standard for the environmental management system, the Asama Plant qualified in 2000, followed by successful qualification of all other Japanese production sites in 2002. In 2011, all Japanese organizations including the Head Office (administration and sales / marketing departments) collectively qualified as a consolidated single body. (Soshin Electronics Malaysia has been qualified for ISO14001 by another qualification agency.)

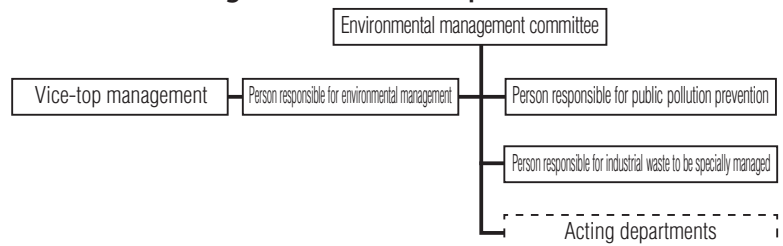
Our environmental audit is comprised of audits conducted by an external qualifying organization, environmental assessments by our Environment Control Office and internal environmental audits by the execution department. The total number of our internal auditors was 183 as of the end of Mar. 2016.

Environmental preservation organization



Audit scene by an ISO14001 qualification organization

Environmental organization of each production site



0 Outline of Environmental Preservation Activities

We have tried to preserve the environment by setting environmental objectives and environmental targets to accomplish the objectives as one element of our environmental activities.

◆ Activity report for 2015 and targets for 2016

【CO₂ emission amount】

We achieved the target for reduction of CO₂ emissions which was part of 2015 activities for environmental load reduction.

Our approach in 2016 for reduction of CO₂ emissions will be to gain a detailed grasp and analysis of electric power consumption by each site and a feasibility study of a gradual changeover to power saving facilities including LED lighting.

Action will continue for productivity improvement, efforts to reduce losses and loads of facility operations and elimination of waste through energy-saving patrol.

【Amount of discharged industrial waste】

In 2015, we achieved the target. This was because the discharged industrial waste reduced substantially due to the fact that there was no waste originated from in-plant layout changes and as disposal was carried out in line with the previously established plan. It is our intention to continue to control waste disposal.

【Enhanced control of contained chemical substances】

Restriction and control of substances usable for products are getting increasingly stricter as evidenced by the decision by the RoHS Directive to put phthalic acid esters under control and by the REACH Regulations' move toward a year-by-year increase of the number of substances to be controlled. In April 2016, we issued the 6th edition of the Soshin Electric Co.'s Green Procurement Guidelines to make it possible to control chemical substances in conjunction with the latest regulation-related information. To control chemical substances contained in product component parts, we conducted an audit based on the Guidelines of suppliers, checking their environmental quality to ensure their adherence to the Guidelines. Within the Group of Soshin Electric companies, environmental audits have been conducted for tighter control of contained chemical substances.

【Environmental complaints and incidents】

In 2015, we had no complaints or incidents related to environmental matters.

We will continue our activities for local environment preservation to prevent any environmental matter-related complaints or incidents from happening in 2016.

◆ Main environmental preservation activities

項目	Achievement in 2015			Targets for 2016
	Target	Achievement	Self-evaluation	
Environmental management system (ISO14001)	<ul style="list-style-type: none"> We will continue environmental education and enlightenment activities. We will make ourselves prepared to move to the Environmental Management System 2015. We will comply with environmental legislation. 	<ul style="list-style-type: none"> The environmental policy was disseminated and education of environmental targets provided. We got aboard seminars to obtain information about the Environmental management System 2015. We reviewed a list of environmental legislation and regulations to ensure that our environmental assessment covered every item. 	○	<ul style="list-style-type: none"> We will continue environmental education and enlightenment activities. We will work in a specific manner to get ready for qualification for the Environmental Management System 2017 on the occasion of updating the System from 2015 issue. We will comply with environmental legislation.
Prevention of global warming	<ul style="list-style-type: none"> We will reduce domestic CO₂ emissions by 6.0% from the 2014 achievement. (We will reduce the CO₂ emission amount divided by sales amount by 5.6% from the 2014 achievement.) 	<ul style="list-style-type: none"> Domestic CO₂ emissions were 7,505 tons in 2015, lower by 2.6% than 7,709 tons of 2014. (The CO₂ emission amount divided by sales amount rose by 6.2% over that of 2014.) 	×	<ul style="list-style-type: none"> We will reduce the CO₂ emission amount in Japan by 10.3% from that of 2015. (We will reduce the CO₂ emission amount divided by sales amount by 18.6% from the 2015 achievement.)
Activities for biodiversity preservation and waste management	<ul style="list-style-type: none"> We will support NPO organizations working to protect wild life. We will reduce discharged waste by 2.5% from the 2014 achievement. 	<ul style="list-style-type: none"> We supported NPO organizations. The waste discharged in 2015 was 123 tons, a 22.6% reduction from 159t of 2014. 	○	<ul style="list-style-type: none"> We will continue to support NPO organizations. We will limit the increase of the amount of discharge at no greater than 16.3% of the 2015 achievement.
Adequate control of chemicals and reduction of hazardous chemicals	<ul style="list-style-type: none"> We will continue inspection with an X-ray fluorescence spectrometer. We will conduct environmental surveys at suppliers to promote further compliance with the green procurement program. We will confirm the compliance status of "lead-free" identification. 	<ul style="list-style-type: none"> We confirmed acceptability of delivered parts which were subject to our acceptance inspection. We promoted green procurement by conducting supplier environmental quality surveys as planned. We conducted environmental assessments and verified successful compliance. 	○	<ul style="list-style-type: none"> We will continue inspection with an X-ray fluorescence spectrometer. We will revise Soshin Electric's Green Procurement Guidelines. We will conduct environmental surveys at suppliers to promote further compliance with the Green Procurement Program. We will carry on verifying at all Soshin companies' compliance with the "leadfree" identification program.

Environmental Report

E nvironmental Accounting

◆ Introduction of environmental accounting

The Group of Soshin Electric companies introduced environmental accounting in 2001. Environmental accounting is for the purpose of gaining a quantitative grasp of the effectiveness of investment and expenses made for environmental preservation.

The guidelines developed by the Ministry of the Environment were complied when the 2015 performance data (from April 1, 2015 to the March 31, 2016) was compiled.

◆ Environmental preservation costs

Out of the total environmental preservation costs the Group of Soshin Electric companies expended in 2015, 24.24 million yen was invested in the introduction and replacement of energy saving facilities. This was a 40% year-on-year increase.

The total expense was 30.84 million yen, being a year-on-year reduction of 9.1%. The major reduction came from the resource recycling cost which showed a 31.8% reduction.

◆ Economic effects coming from environmental preservation measures

The economic effects in 2015 were 22.33 million yen. Of this, global environmental preservation effects decreased by 55.6% and resource recycling effects by 33.3% from a year earlier.

◆ Environmental preservation costs and economic effects

Unit: 10,000 yen

Category	Specifics of the main measures	Investment		Expenses		Economic effects	
		2014	2015	2014	2015	2014	2015
Pollution prevention cost	Investment and expenses for pollution prevention	0	0	188	203	-	-
Global environmental preservation cost	Investment and expenses for CO ₂ reduction such as introduction of energy saving equipment	1,728	2,424	79	71	1,409	775
Resource recycling cost	Investment and expenses for effective use of resources, including water saving, and reduction, recycling, processing and disposition of waste	0	0	1,546	1,054	2,187	1,458
Upstream / Downstream costs	Cost for controlling environmental burdens that arise in the business upstream and downstream	0	0	0	0	-	-
Administration cost	General and labor expenses necessary for environmental preservation such as acquisition and maintenance of ISO14001 qualification, environmental education, and monitoring and measurement of environmental burdens	0	0	724	922	-	-
R&D cost	Expenses and labor charges required for R&D, planning and designing of products for environmental impact reduction and also for R&D of products contributing to environmental preservation	0	0	0	0	-	-
Social activity cost	Expenses for preservation of nature, greening and support for the local environment, public announcements of environmental information and advertisements for environmental matters	0	0	857	834	-	-
Environmental remediation cost	Expenses for improvement of contaminated soil and recovery of destroyed nature	0	0	0	0	-	-
Total		1,728	2,424	3,394	3,084	3,596	2,233

Environmental Report

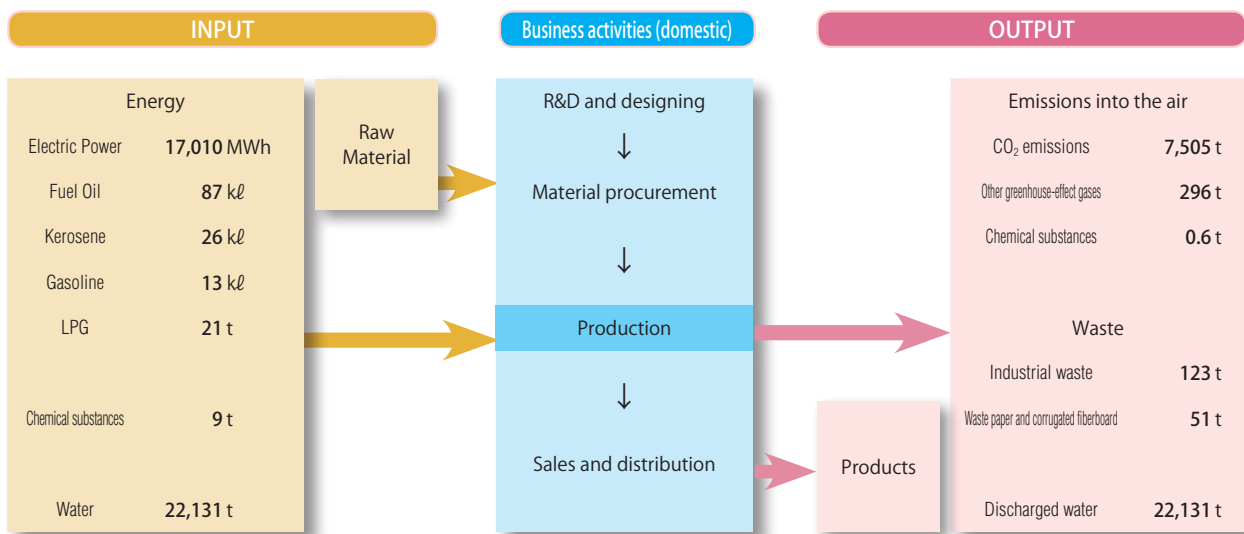
Mass Balance (Inputs and outputs)

This section describes resources and energy input for domestic business activities by the Group of Soshin Electric companies, products, waste and other discharged items that resulted from domestic business activities.

Outline of inputs and outputs

Input comprises parts, raw materials, energy, chemical substances and water necessary for business activities while output comprises product, CO₂ emissions, water and waste developed incidentally to production activities.

The Group of Soshin Electric companies strives to reduce as much as possible input from the aspects of energy saving to prevent the exhaustion of natural resources. This is an attempt to reduce output other than products.



Management of Contained Chemical Substances

◆ Survey of contained chemical substances

We made our products free from lead and eliminated other prohibited substances from products in 2006 and the Group of Soshin Electric companies has since then fully complied with the requirements of the RoHS Directive, with the exception of several products made to meet customers' requirements.

In an attempt to respond to requests from customers for timely provision of information on chemical substances contained in products, we have set up a database for management of chemical substances.

◆ Analysis with an X-ray fluorescence spectrometer

Parts and materials that possibly contain prohibited substances will be subjected to screening with an X-ray fluorescence spectrometer to confirm that they are free from prohibited substances.

◆ Green procurement

The Group of Soshin Electric companies has proceeded with procurement of parts and materials with the minimal possible environmental loads. For this, we issued guidelines for green procurement, Rev. 6 in Apr. 2016. Every supplier is requested to observe these guidelines proactively as reference.

In addition, the Group of Soshin Electric companies has conducted an environmental quality survey on suppliers' premises and confirmed that their management system of chemical substances is acceptable.

Environmental Report

A pproach to Reduction of Environmental Burdens ●

To prevent global warming, we tackled reduction of CO₂ emissions as well as energy saving.

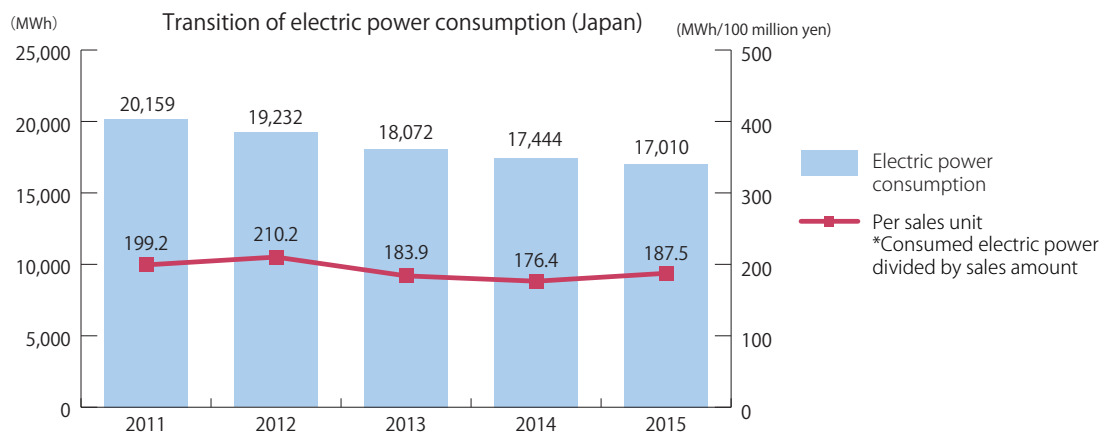
The domestic consumption of electric power in 2015 was reduced by 2.5% from a year earlier due to the success in additional countermeasures such as the introduction of energy saving equipment, and power saving and energy saving patrol. The consumed electric power divided by the sales amount increased by 6.3% over a year earlier.

At overseas sites, the amount of consumed electric power registered a 12.8% increase and the consumed electric power divided by the sales amount rose by 21.4% over a year earlier.

More than 90% of CO₂ emissions originate from electric power consumption. Domestic CO₂ emissions decreased by 2.6% year-on-year, while the consumed electric power divided by the sales amount increased by 6.2% over the same time. At overseas sites, CO₂ emissions increased by 12.8%, and consumed electric power divided by sales amount was up by 21.4% over a year earlier. In 2016, we will try to reduce CO₂ emissions by 10.3% on a year-on-year basis.

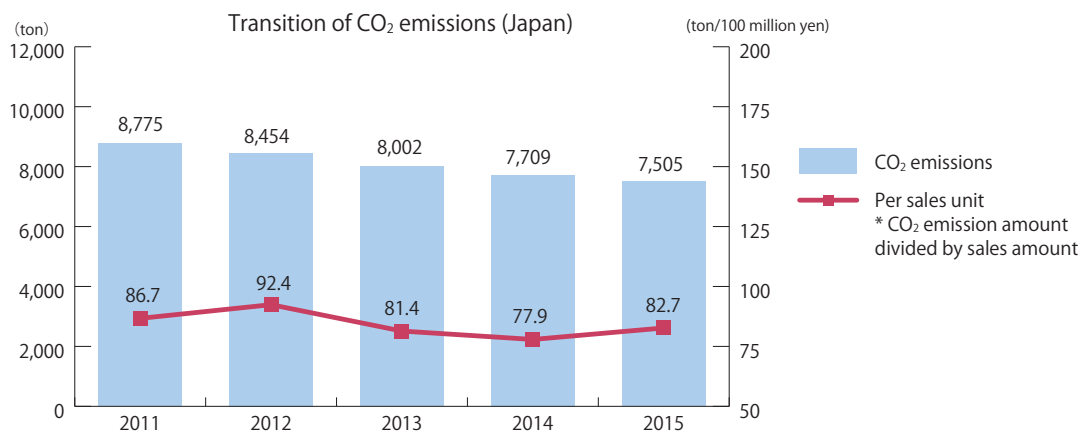
In 2016, we will try to reduce CO₂ emissions by 10.3% on a year-on-year basis.

◆ Electric power consumption



Transition of electric power consumption (Overseas)	2011	2012	2013	2014	2015
Electric power consumption (MWh)	1,249	1,405	1,237	1,105	1,247
Per sales unit (MWh/100 million yen)	189.2	156.1	114.5	91.3	110.8

◆ CO₂ emissions

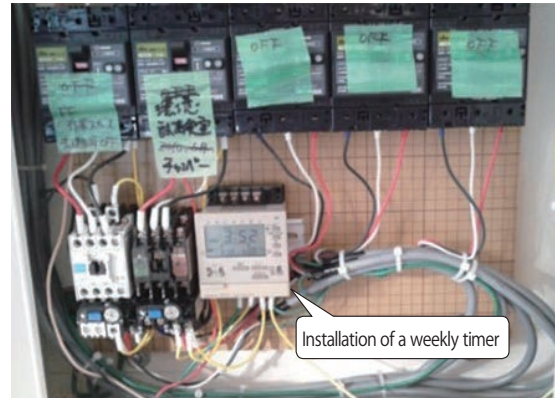


Transition of CO ₂ emissions (Overseas)	2011	2012	2013	2014	2015
CO ₂ emissions (ton)	530	595	524	468	528
Per sales unit (ton/100 million yen)	80.3	66.1	48.5	38.7	47.0

C ase Example of Energy Saving Measures ●

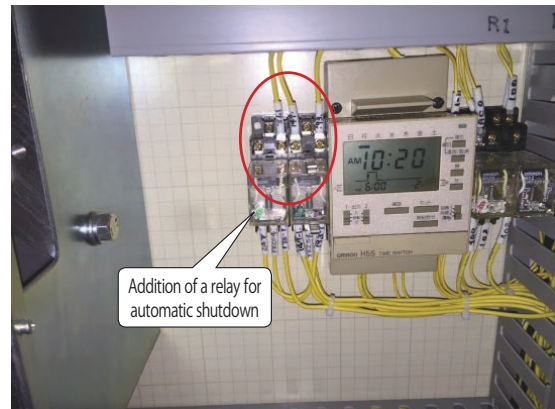
(1) Electric power saving coming from the environmental test room air conditioner exhaust fans resting during nighttime and on non-working days

The environmental test room fans used to be turned off manually and there were times when operators failed to inform the person taking over from them upon completion of a day's work that they were required to turn off the fans and stop the air conditioners. The settings were not correctly made to meet the actual operation schedule. To deal with this problem, the environmental test room fan system was refurbished to include a weekly timer of a sequencer (PLC) for automatic shutdown and for efficient operations. This made an electricity saving of 75% a reality.



(2) Power saving operation of the clean room air conditioners

We decided the temperature controller of the clean room should be turned off at nighttime and on non-working days because the clean room was often idle during such time periods. This idea brought us a 51% saving.

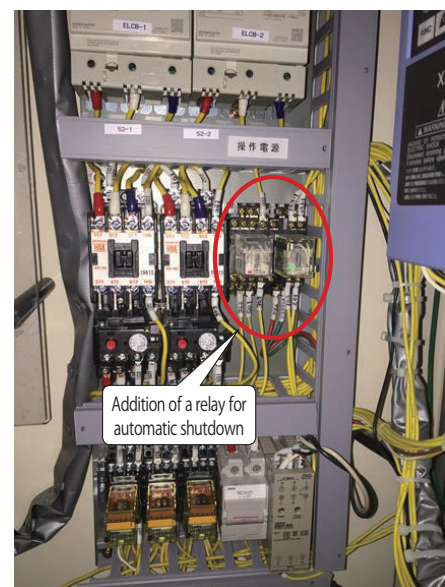
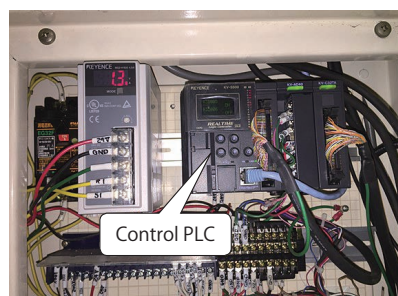


(3) Power saving from automatic shutdown of air conditioner exhaust fans at nighttime and on non-working days

The exhaust fans used to be turned off manually and failure to communicate to successors the need to turn off air conditioners took place once in a while when the operator changed.

An improvement was made for automatic turn-off by adding the facility for automatic shutdown with an annual timer of a sequencer (PLC).

A 63% saving was made possible with this idea.



Environmental Report

A pproach to Resource Utilization ●

For preservation of the environment, the Group of Soshin Electric companies considers it imperative to make our society recycling-oriented. For this, we will promote “reduce”, “reuse” and “recycle” (3Rs) regarding the waste discharged as a result of business activities as resources.

Furthermore, we use no providers of waste disposal services other than those that have earned administrative approval so that disposal services will be provided in compliance with relevant laws. Our control includes issuance of manifests (control manifests for industrial waste) and retention of disposal records.

Waste disposal service providers are also controlled through our periodic visits to the disposal sites.

In 2015, we audited 10 sites from 9 service providers and learned that they operated acceptably.

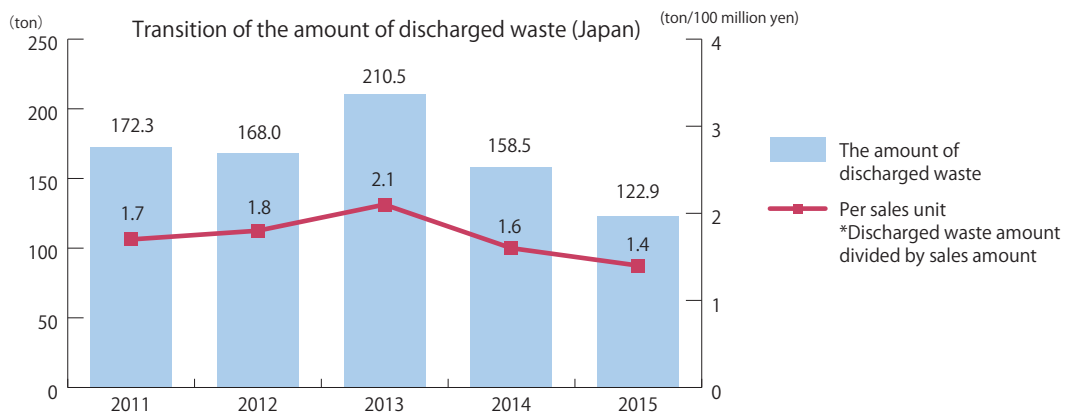
The amount of discharged waste in Japan registered a decrease of 22.6% from the previous year.

Electric power consumed in Japan divided by the sales amount also decreased by 12.5%. We will make efforts to successfully reduce waste so that we can achieve the target we set for 2016, which is a maximum increase of 16.3% year-on-year.



On-site inspection scene of an industrial waste disposal service provider

◆ The amount of discharged waste



Transition of the amount of discharged waste (Overseas)	2011	2012	2013	2014	2015
The amount of discharged waste (ton)	3.7	3.8	7.6	7.0	9.4
Per sales unit (ton/100 million yen)	0.6	0.4	0.7	0.6	0.8

TOPICS

◆ SORAMIL

The LLP SAKUSAKU HIMAWARI project, a Limited Liability Partnership program, of which Soshin Electric Co. is a member, is a contributor to the mega-solar power generation business run by Saku City and proactively takes part in local activities for environmental preservation and enlightenment.

To give something back to member companies, SORAMIL, an LED type street light, powered by photovoltaic electricity and environment-friendly, was set up last year.

They are as light as conventional street lights and play a part in activities to help prevent global warming under the slogan of “Stop Global Warming.”



Questionnaire: 2016 Social Responsibility & Environmental Report

We thank you very much for your reading through this 2016 Social Responsibility & Environmental Report of the Group of Soshin Electric companies.

It would be our great pleasure if you kindly let us have your impressions about this report. The impressions you send to us will be used as a valuable reference for our oncoming environmental preservation activities and efforts to generate future reports.

* Please check the boxes of the judgment terms that best represent your impressions.

Q 1 Your impressions about this report.

1) Overall impression

Good

Average

Poor

2) Comprehensibility

High

Average

Low

3) Content

Fulfilling

Average

Incomplete

Q 2 Did any specific articles attract your particular attention? If, yes, please specify:

Article _____ on page _____

Q 3 Please give your impressions or advice about our environmental activities and this report in the space provided below:

We are very grateful for your answers. We would be most obliged if you kindly spend a few more minutes to fill in the following 3 lines, provided that it is not an imposition to you.

*Personal information given here will used only for the purpose stated above.

Your Name : _____ Male / female, Age _____

Address : _____

Occupation : _____

Please send your answers to this questionnaire to the e-mail address or fax number given below:

To **Soshin Electric Co., Ltd. Environment Control Office**

Fax: 0267-68-4553 Tel: 0267-67-4580

E-mai: environment@soshin.co.jp

2016

Social Responsibility &
Environmental Report



双信電機株式会社
SOSHIN ELECTRIC CO., LTD.

URL : <http://www.soshin.co.jp>

No.1-1-1, Shibaura, Minato-ku, Tokyo 105-0023, Japan
Tel. 81-3-5730-4500 Fax. 81-3-5730-4504

Environment Control Office
Tel. 81-267-67-4580 Fax. 81-267-68-4553
E-mail: environment@soshin.co.jp

