

Product Information

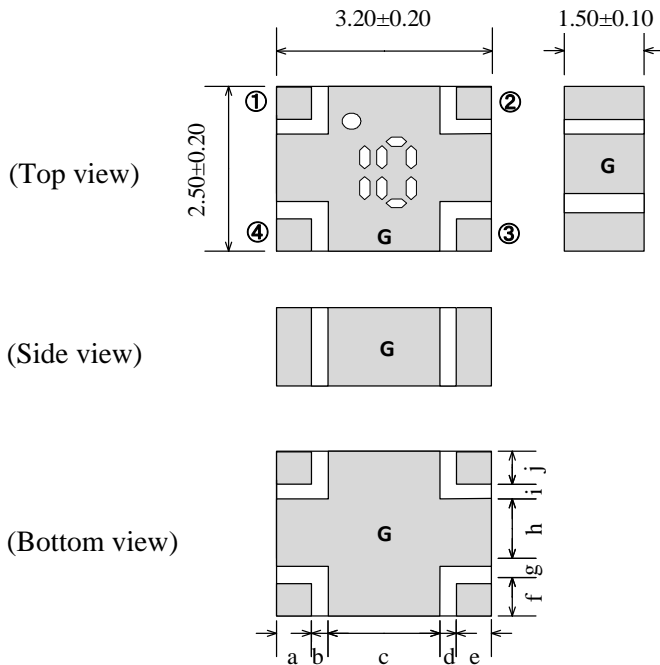
Control No. : ARP-4671000-E 1

Issued on May 29, 2024

1. Type No.

HMD6710D-30M2000

2. Dimension (Unit : mm)



Measured data

RoHS Compliant Part

	Configuration1	Configuration2
①	Input	Direct
②	Direct	Input
③	Isolated	Coupled
④	Coupled	Isolated
G	GND	GND

Terminal Dimensions	
a	0.52 +/- 0.10
b	0.30 +/- 0.10
c	1.56 +/- 0.10
d	0.30 +/- 0.10
e	0.52 +/- 0.10
f	0.49 +/- 0.10
g	0.30 +/- 0.10
h	0.92 +/- 0.10
i	0.30 +/- 0.10
j	0.49 +/- 0.10

3. Electrical characteristics

Parameter	Specification	Band1	Unit
Pass band frequency	Specification	1700-2300	MHz
Nominal impedance	Specification	50	ohm
Mean Coupling	Specification	30.0 +/- 1.5	dB
	Typical	29.39	
Insertion Loss (at 25degC.)	Specification	0.075 Max.	dB
	Typical	0.062	
Input port V.S.W.R.	Specification	1.15 Max.	-
	Typical	1.04	
Directivity	Specification	20 Min.	dB
	Typical	25.33	
Frequency Sensitivity	Specification	0.35 Max.	dB
	Typical	0.17	

4. Note

- 4.1 Operating Temperature Range
- 4.2 Storage Temperature Range
- 4.3 Max Input Power
- 4.4 Standard Reel Quantity

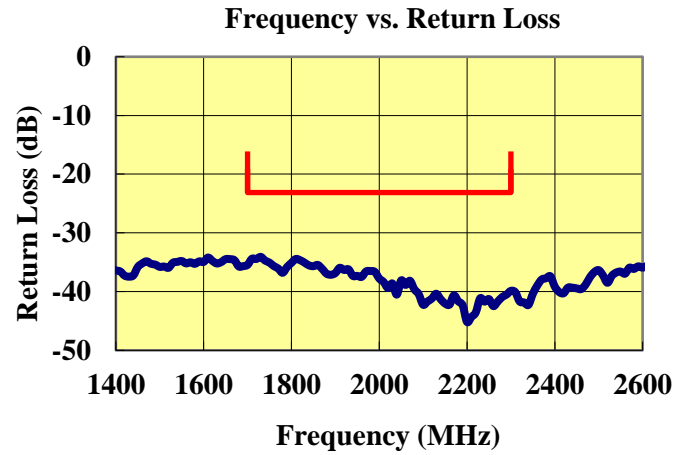
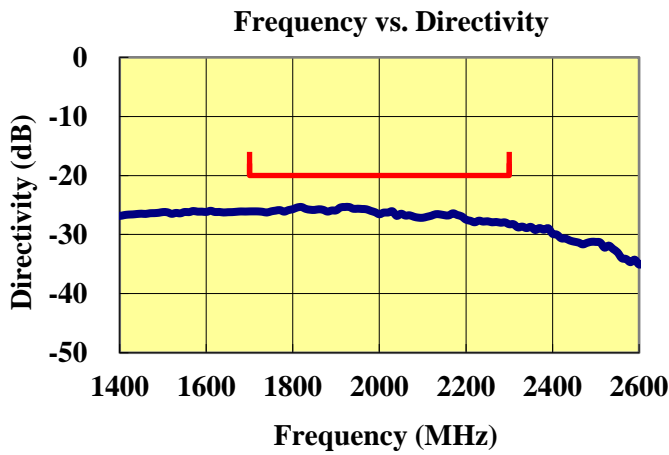
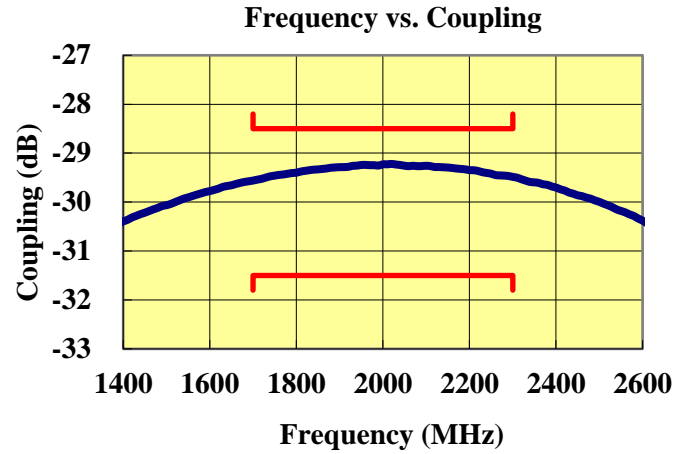
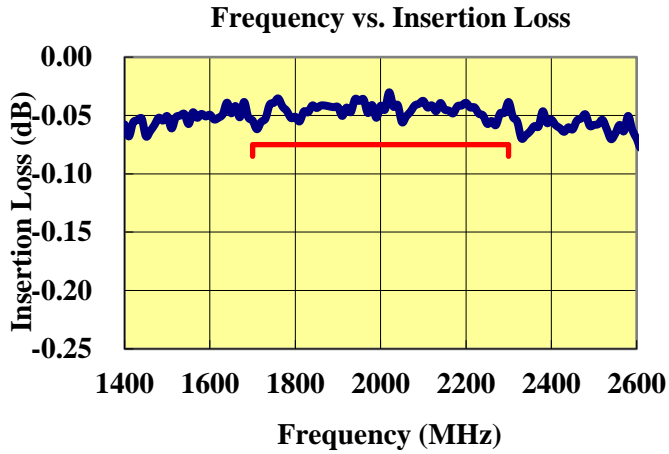
- : -55 to +105 degC.
- : -20 to +35 degC. (In a Taping Package)
- : 80W Avg/CW
- : 2,000 pcs (per reel, per bag)

Approved by	Confirmed by	Raised by
Y. Imai	S.Suzuki	K.Adachi

SOSHIN ELECTRIC CO., LTD

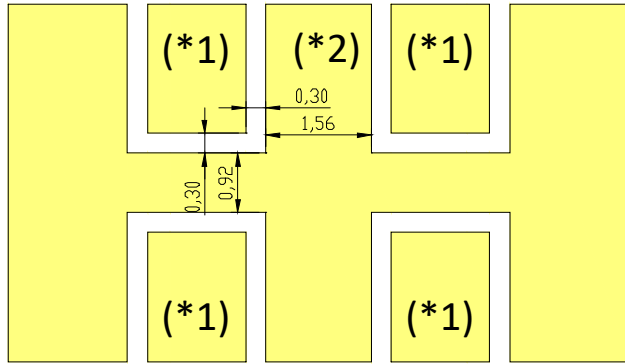
5.Representative characteristics

Measured data

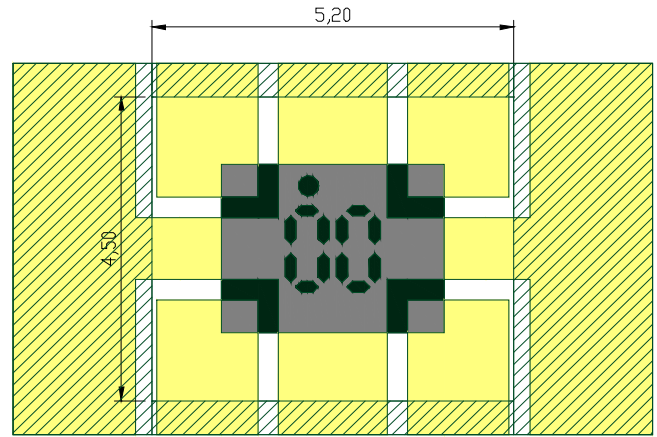


6.Recommended Land Pattern (Unit:mm)

*Land Pattern



*Resist Pattern



*1 50 ohm impedance Line

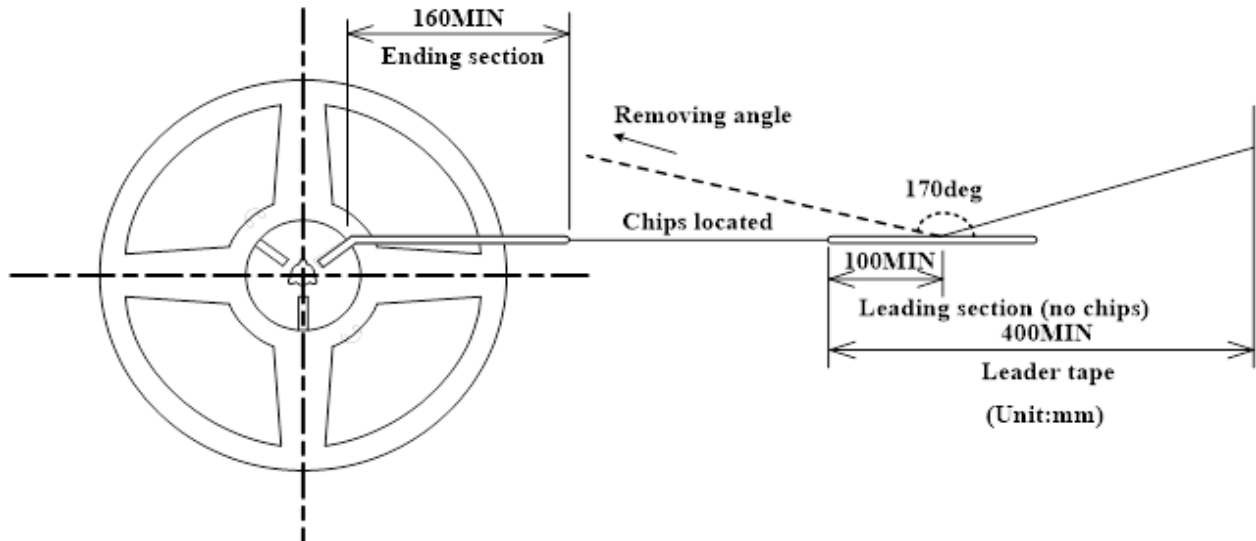
*2 Ground Plane

7. Packing method

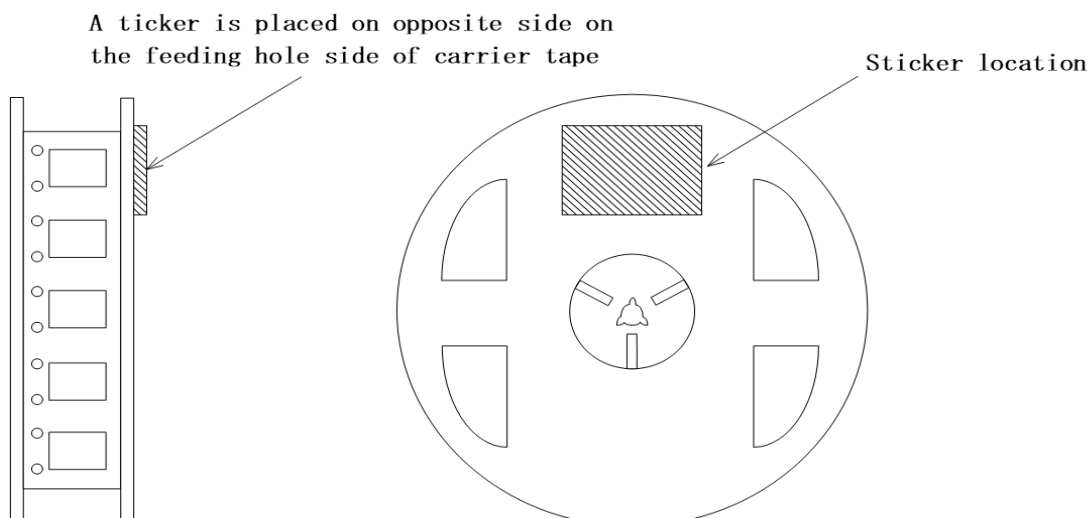
7. 1 Taping conditions

Taping conditions are shown below. Refer to IEC60286-3

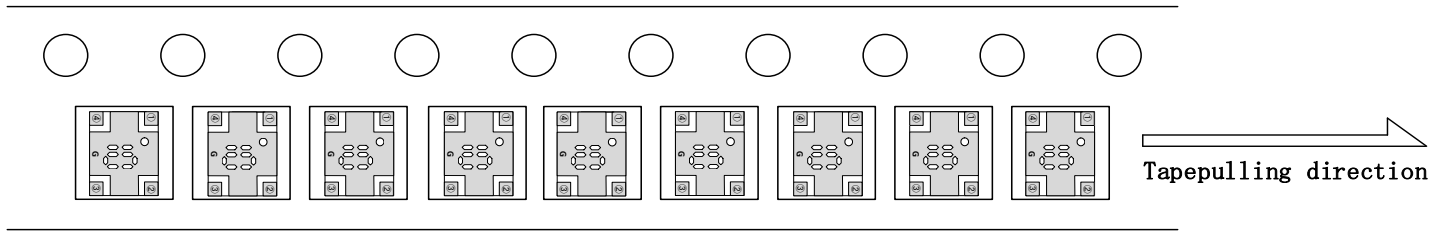
- (1) Tape must be wound clockwise with the feeding hole coming to the right hand side.
- (2) Top cover tape must not cover feeding holes of carrier tape and/or show out of carrier tape.
- (3) A blank section carrying no chips of a length of 160mm min. on ending section and 100mm min. on leading section must be provided.
- (4) A leading section of 400mm min. must be provided on top cover tape.



- (5) To end tape winding, the leading section of top cover tape must be stuck on a side of a reel with adhesive tape.
- (6) Removing force of top cover tape in the unwinding with an angle of 170 degrees between the removed side of a reel and carrier tape must be 0.1 to 1.0N.
- (7) When the embossed tape is turned upside down with the sealing tape peeled off, the filter body inside of the tape must fall off and the mounter must not cause a take-up mistake.
- (8) A sticker carrying Soshin product №, quantity, lot №, inspection date is to be placed on the specified side of reels. And Lot No. means our production control number. The shipment records are available if requested.



(9) Product orientation must be consistent. Products must not be positioned out of the mounting location.

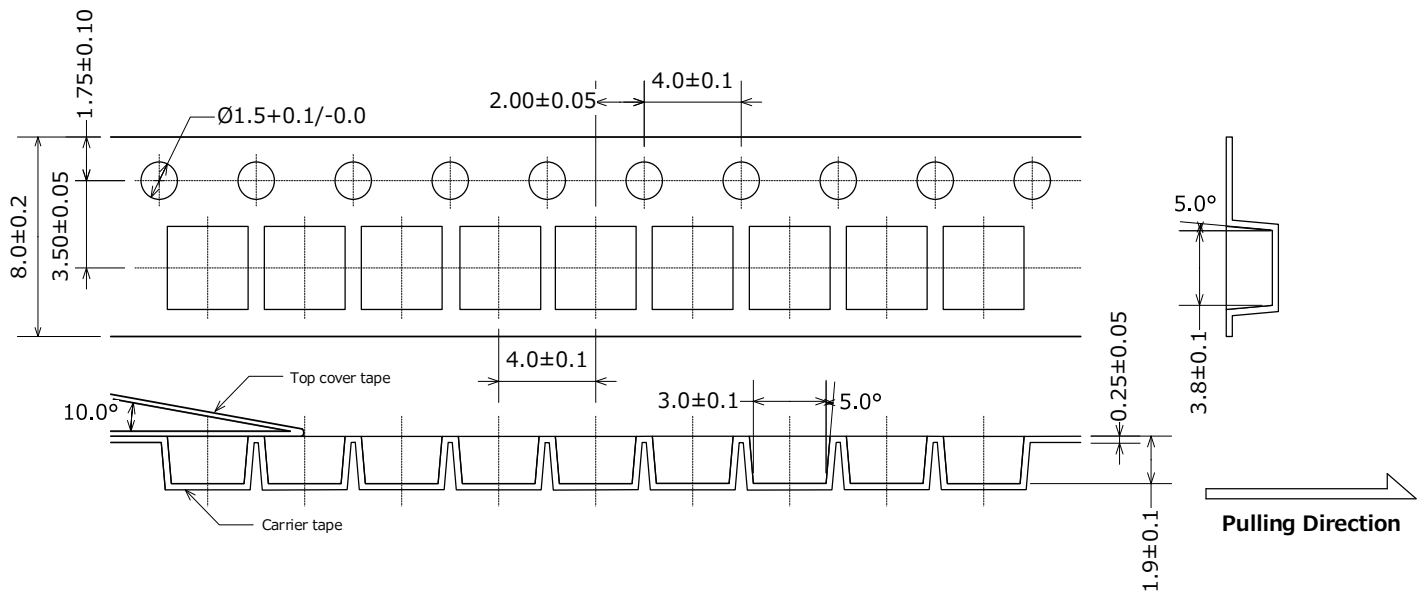


(10) A taping reel must be sealed in a plastic bag, individually.

(11) Tape-packaged quantity

The quantity is 2,000 pcs per single tape-package as a rule.

7. 2 Dimensions of the carrier tape (Unit : mm)



7. 3 Carrier tape reel dimensions (Unit : mm)

