

# Product Information

Control No. : ARP-490400-E 1

Issued on July 5, 2010

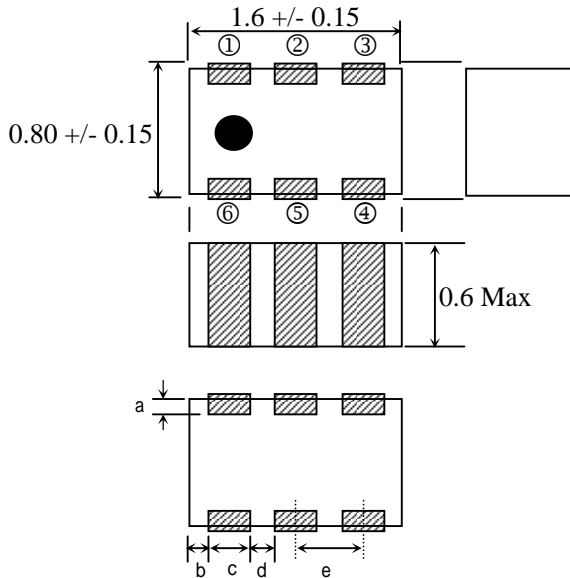
## Application : 2.495GHz LPF for Bluetooth & Wireless LAN & Wimax

### 1. Type No.

HMD904D-T

RoHS Compliant Parts & Lead Free

### 2. Dimension (Unit : mm)



Terminal	
①	GND
②	Output
③	GND
④	GND
⑤	Input
⑥	GND

Terminal Dimensions	
a	0.15 Typ.
b	0.15 +/- 0.15
c	0.30 +/- 0.10
d	0.20 +/- 0.10
e	0.50 +/- 0.10

### 3. Electrical characteristics

Pass band	Specification	Typical	Unit	Remark
fc (Center frequency)	2495	-	MHz	
Pass band frequency	2300-2690	-	MHz	
Nominal impedance	50	-	ohm	
Insertion Loss in 2300~2690MHz at 25degC.	0.50 Max.	0.22	dB	Wimax band
Insertion Loss in 2300~2690MHz BW at -40 to +85degC.	0.60 Max.	-	dB	
Insertion Loss in 2400~2500MHz at 25degC.	0.35 Max.	0.20	dB	BT & W-LAN band
Insertion Loss in 2400~2500MHz at -40 to +85degC.	0.45 Max.	-	dB	
VSWR in BW	1.5 Max.	1.18	-	
Ripple	0.3 Max.	0.08	dB	

Attenuation	Specification	Typical	Unit	Remark
4600 MHz - 5380 MHz	30 Min.	32.29	dB	2*f
6900 MHz - 8070 MHz	30 Min.	34.08	dB	3*f

### 4. Note

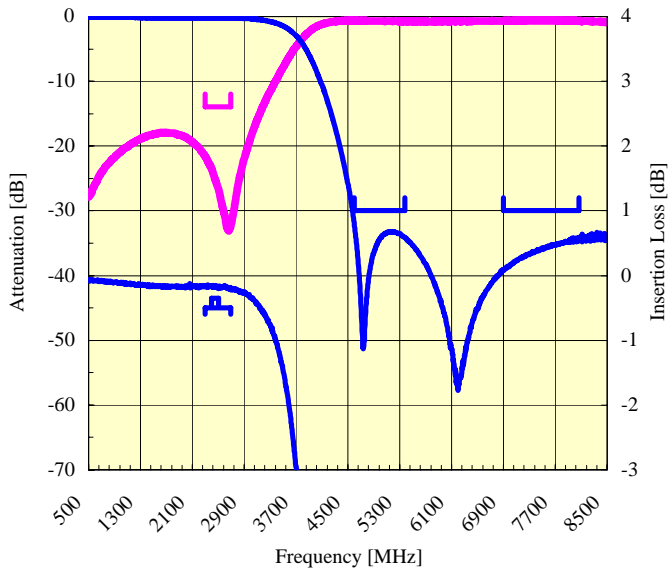
- 4.1 Operating Temperature Range : -40 to +85 deg.C
- 4.2 Storage Temperature Range before soldering in taping package : -20 to +35 deg.C
- 4.3 Minimum Ordering Quantity : 3,000 pcs (per reel, per bag)

	Approved by	Confirmed by	Raised by
	T.Hirai	M. Urano	M.Urano

SOSHIN ELECTRIC CO., LTD

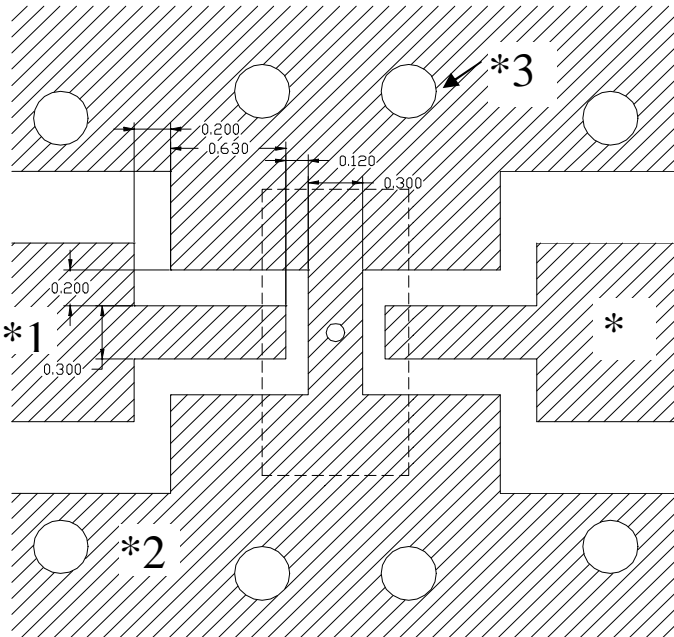
## 5. Representative characteristics

**Broad Band Frequency Response**

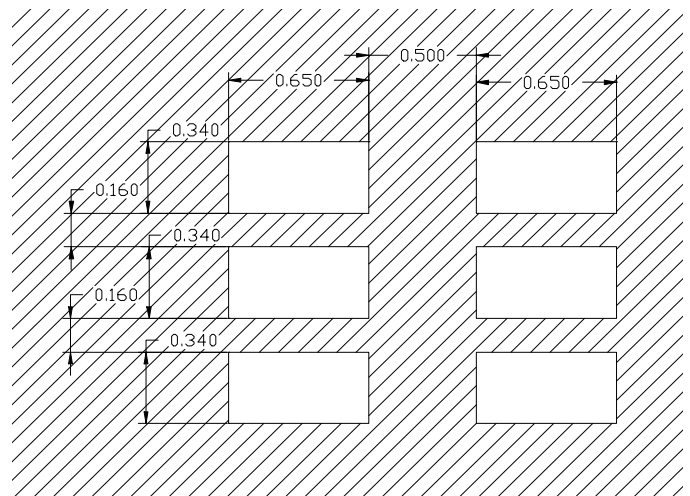


## 6. Recommendation Land Pattern (Unit:mm)

**\*Land Pattern**



**\*Resist Pattern**



**\*1 50 ohm Impedance Line**

**\*2 Ground Plane**

**\*3 Thorough Hole**